

DOT4
★ DISTRIBUTION ★



**2017
CATALOGUE**

DOT4 DISTRIBUTION IS A LEADING EUROPEAN DISTRIBUTOR OF FASHION ORIENTATED PROTECTIVE MOTORCYCLE CLOTHING FOR THE CAFÉ RACER MARKET.

CONTENTS

P5 | RESURGENCE GEAR
P17 | FUEL
P27 | HOLY FREEDOM
P67 | OILY RAG
P113 | GARIBALDI
P127 | ASHLEY WATSON
P131 | MOTOBAILEY
P135 | ROLAND SANDS DESIGN

WWW.DOT4DISTRIBUTION.COM



+44 (0)20 3514 2413

INFO@DOT4DISTRIBUTION.COM



UNIT 15, WOODLEA PARK, STATION APPROACH, MEDSTEAD,
FOUR MARKS, HAMPSHIRE, GU34 5AZ, UK

WE ARE ONE OF THE LEADING MOTORCYCLING CLOTHING DISTRIBUTORS FOR SOME OF THE BEST KNOWN AND BEST SELLING CAFÉ RACER INSPIRED BRANDS ON THE MARKET. WITH DISTRIBUTION RIGHTS TO THE UK AND/OR PRIME EUROPEAN MARKETS FOR MANY OF THE BRANDS WE REPRESENT.*

WE PRIDE OURSELVES IN OFFERING THE HIGHEST CUSTOMER SERVICE LEVELS AVAILABLE TO MANUFACTURERS AND RETAILERS.

WHO IS DOT4 DISTRIBUTION?

Dot4 Distribution is a leading European distributor of fashion orientated protective motorcycle clothing for the café racer market.

Our objective is to introduce European bikers to new and exciting lines of motorcycle clothing that offers the highest levels of rider protection and comfort on and off the bike. Our teams ensure that quality styling combined with the advances in technology will satisfy the most demanding consumers.

Our aim is to lead the way in European motorcycle clothing innovation and distribution. Whether that's through providing an unique alternative to Kevlar® based clothing (with Resurgence Gear's Pekev® lining) or through the promotion of inspirational designers aiming to challenge the normal rules of motorcycle clothing.

In order to achieve this, our teams are always looking to source new manufacturers with world-class technology that ensure riders are safe and protected or help facilitate independent designers to establish themselves in Europe and in turn create an enviable distribution network of specialist retailers that sell some of best and innovative products on the market.

By taking advantage of new cloud based technologies, we provide one of the highest customer service levels available to retailers and manufacturers. This use of technology means that we can protect and improve the image of the motorcycle clothing brands that we represent and help delivery innovative sales and marketing approaches for both manufacturers and retailers.

*UK distributor for Resurgence Gear, Ashley Watson, Garibaldi, Holy Freedom, Fuel, MotoBailey and Oily Rag Clothing.
European distributor for Resurgence Gear, Ashley Watson, Roland Sands Design, MotoBailey and Oily Rag Clothing.



RESURGENCE[®]
GEAR

PRODUCTS AVAILABLE IN UK AND EUROPE



CODE | RG-M-RJ-BK | RG-M-RJ-GR

ROCKER | CLASSIC RETRO STYLE JACKET WITH CUTTING EDGE PROTECTION**FEATURES**

- ★ 100% PEKEV® lined
- ★ Rotated pre-curved sleeves
- ★ Four zipped and two flap external pockets
- ★ DuPont™ HT Teflon fabric protector
- ★ Antique brass buckles at waist
- ★ Removable CE approved D30® T5 Evo X armour in elbows and shoulders, and D30® Viper Stealth back protector
- ★ Plush silk style lining with triple stitching, two internal pockets
- ★ YKK zips used throughout
- ★ Internal belt loops

COLOURS**AVAILABLE SIZES**

BLACK

OLIVE GREEN

S	M	L	XL	XXL	XXXL	XXXXL
38"	40"	42"	44"	46"	48"	50"



CODE | RG-M-DJ

SELVEDGE DENIM JACKET | LEVI'S TRUCKER STYLE JACKET WITH HIGH RESISTANCE TO ROAD ABRASION AND IMPACT**FEATURES**

- ★ 60% PEKEV® lining coverage for abrasion resistance
- ★ Selvedge denim construction with triple stitching
- ★ Mesh wicking internal liner, two zipped pockets
- ★ Two zipped and two flap external pockets
- ★ DuPont™ HT Teflon fabric protector
- ★ Pockets for removable armour at elbow, shoulder, and spine to fit optional D30® armour
- ★ YKK zips used throughout
- ★ Internal belt loops

COLOURS**AVAILABLE SIZES**

RAW SELVEDGE

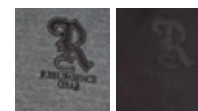
S	M	L	XL	XXL	XXXL
38"	40"	42"	44"	46"	48"



CODE | RG-M-HD-CH | RG-M-HD-BLK

EASY RIDER | CASUAL HOODED TOP WITH CE APPROVED ARMOUR**FEATURES**

- ★ 100% PEKEV® lined
- ★ CE approved D30® T5 Evo X armour in elbows and shoulders, and D30® Viper Stealth back protector
- ★ Relaxed fit, super soft cotton fleece
- ★ DuPont™ HT Teflon fabric protector
- ★ Silk style lining with two internal pockets
- ★ Two external YKK zipped pockets
- ★ Internal belt and thumb loops

COLOURS**AVAILABLE SIZES**

GREY

BLACK

S	M	L	XL	XXL	XXXL
38"	40"	42"	44"	46"	48"



CODE | RG-M-RS-BLK

RIDING SHIRT | CASUAL CANVAS STYLE SHIRT WITH PADDED THERMAL LINING**FEATURES**

- ★ 60% PEKEV® coverage to front of breast
- ★ Quilted faux silk lining
- ★ Padded thermal lining
- ★ Shoulder, elbow, and spine armour pockets to fit optional D30® armour
- ★ Two internal breast pockets
- ★ Two external breast pockets
- ★ Central front zipper
- ★ Button popper front flap

COLOURS**AVAILABLE SIZES**

BLACK

S	M	L	XL	XXL	XXXL
38"	40"	42"	44"	46"	48"



CODE | RG-M-RS-DN

RIDING SHIRT | CASUAL DENIM STYLE SHIRT WITH PADDED THERMAL LINING**FEATURES**

- ★ 60% PEKEV® coverage to front of breast
- ★ Quilted faux silk lining
- ★ Padded thermal lining
- ★ Shoulder, elbow, and spine armour pockets to fit optional D30® armour
- ★ Two internal breast pockets
- ★ Two external breast pockets
- ★ Central front zipper
- ★ Button popper front flap

COLOURS**AVAILABLE SIZES**

SELVEDGE DENIM

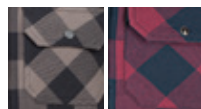
S	M	L	XL	XXL	XXXL
38"	40"	42"	44"	46"	48"



CODE | RG-M-RS-CK | RG-M-RS-CK | RG-M-RS-GR-CK

RIDING SHIRT | CASUAL LUMBERJACK STYLE SHIRT WITH PADDED THERMAL LINING**FEATURES**

- ★ 60% PEKEV® coverage to front of breast
- ★ Quilted faux silk lining
- ★ Padded thermal lining
- ★ Shoulder, elbow, and spine armour pockets to fit optional D30® armour
- ★ Two internal breast pockets
- ★ Two external breast pockets
- ★ Central front zipper
- ★ Button popper front flap

COLOURS**AVAILABLE SIZES**

GREY CHECK



RED CHECK

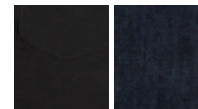
S	M	L	XL	XXL	XXXL
38"	40"	42"	44"	46"	48"

D30®
IMPACT PROTECTION

CODE | RG-M-CR | RG-M-SK-CR | RG-M-SK-CR-BLK

CAFE RACER | STYLISH MENS JEANS WITH REMOVABLE CE APPROVED KNEE AND HIP ARMOUR**FEATURES**

- ★ 60% PEKEV® lined coverage reinforced for abrasion resistance
- ★ CE approved D30® T5 Evo X hip and knee armour included
- ★ Hip and knee armour pockets with adjustment
- ★ Relaxed classic five pocket jean
- ★ Wicking comfort mesh liner
- ★ 12oz Selvedge denim, woven on a shuttle loom
- ★ Available in regular straight or skinny leg versions

COLOURS**AVAILABLE SIZES**

BLACK

SELVEDGE RAW

Waist	30" 32" 34" 36" 38" 40" 42" 44"
Leg	32" 34" (excluding turn-up)
Cut	Regular or Skinny

D30®
IMPACT PROTECTION

CODE | RG-M-HT-BLK | RG-M-HT-OS

HERITAGE | TRADITIONAL MENS BOOT CUT DENIM WITH COMFORT WICK LINING**FEATURES**

- ★ 60% PEKEV® lined coverage to the top of the boot
- ★ Wicking soft comfort mesh liner
- ★ 13oz stretch denim, five pocket design
- ★ CE approved D30® T5 Evo X hip and knee armour included
- ★ Adjustable hip and knee armour pockets
- ★ Five pocket stretch denim jeans

COLOURS**AVAILABLE SIZES**

HERITAGE BLACK

HERITAGE OLD SCHOOL

Waist	30" 32" 34" 36" 38" 40" 42" 44"
Leg	34"
Cut	Boot

D30®
IMPACT PROTECTION



COLOURS

INDIGO
BLUEVINTAGE
BROWN

CODE | RG-M-PKV-IB | RG-M-PKV-V

VOYAGER | THE WORLD'S HIGHEST CE LEVEL 2 ABRASION RATED MEN'S JEAN

FEATURES

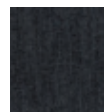
- ★ 100% PEKEV® coverage from waist to ankle
- ★ Five pocket design, boot cut fit
- ★ Highest abrasion rating at 10.83 seconds
- ★ Mesh wicking internal liner
- ★ CE approved D30® T5 Evo X hip and knee armour included
- ★ Adjustable hip and knee pockets
- ★ Restraining boot stirrups
- ★ CE rating for the entire clothing

AVAILABLE SIZES

Waist	30" 32" 34" 36" 38" 40" 42" 44"
Leg	30" 32" 34"
Cut	Boot



COLOURS

BLUE
BLACK

CODE | RG-M-PM-BB

WARRIOR PROMODAL JEAN | LIGHTEST JEANS UTILISING PEKEV LITE DELIVERING ARMoured PROTECTION

FEATURES

- ★ 60% PEKEV Lite® coverage
- ★ Abrasion resistance rating of 5.21 seconds
- ★ 11oz stretch Promodal outer denim
- ★ Thinner and lighter than standard PEKEV®
- ★ Wicking comfort inner mesh
- ★ 50% cooler than traditional denim
- ★ Anti bacteria and softening agents in denim
- ★ Height adjustable knee, and hip armour pockets to fit D30® armour
- ★ Skinny leg cut

AVAILABLE SIZES

Waist	28" 30" 32" 34" 36" 38" 40" 42" 44"
Leg	30" 32" 34"
Cut	Skinny

D30®
IMPACT PROTECTION



COLOURS



KHAKI

BLACK

CODE | RG-M-CY-KKI | RG-M-CY-BLK

CITY CHINO | MILITARY STYLE CHINO WITH BREATHABLE WICKING MESH

FEATURES

- ★ 60% PEKEV® lined
- ★ Traditional military straight cut for men
- ★ Inner comfort wicking mesh
- ★ Constructed from crease resistant cotton twill
- ★ CE approved D30® T5 Evo X hip and knee armour included
- ★ Hip and knee armour pockets adjustable

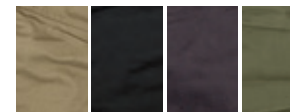
AVAILABLE SIZES

Waist	30" 32" 34" 36" 38" 40" 42" 44"
Leg	34"
Cut	Straight

D30®
IMPACT PROTECTION



COLOURS



SAND

BLACK

GREY

GREEN

CODE | RG-M-CT-BR | RG-M-CT-CH | RG-M-CT-GR | RG-M-CT-B

CRUISER CARGO | THE WORLD'S FIRST CE LEVEL 2 MENS CARGO PANTS WITH LONGEST RATED SLIDE TIME

FEATURES

- ★ 100% PEKEV® lined coverage from waist to ankle
- ★ 100% cotton outer
- ★ CE Level 2 abrasion resistance rating at 8.17 seconds
- ★ CE rating for the entire clothing
- ★ CE approved D30® T5 Evo X hip and knee armour included
- ★ Side zippers to insert or remove armour
- ★ Four front pockets, two rear slit pockets
- ★ Lightweight, high quality construction
- ★ Relaxed fit
- ★ Ankle cuff straps
- ★ YKK zips throughout

AVAILABLE SIZES

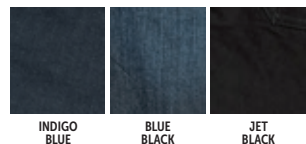
Waist	30" 32" 34" 36" 38" 40" 42" 44"
Leg	30" 32" 34"
Cut	Relaxed fit

D30®
IMPACT PROTECTION

CODE | RG-L-PKV-IB | RG-L-PKV-BB | RG-L-PKV-JB

LADIES VOYAGER | HIGHEST CE LEVEL 2 ABRASION RATED JEANS**FEATURES**

- ★ 100% PEKEV® coverage
- ★ Abrasion resistance rating of 10.83 seconds
- ★ Inner comfort wicking mesh
- ★ Casual boot cut jeans
- ★ 2.5" rise at back with double belt loop
- ★ 13oz quality denim outer
- ★ Restraining boot stirrups
- ★ Height adjustable knee, and hip armour pockets
- ★ CE approved D30® T5 Evo X hip and knee armour included

COLOURS

INDIGO BLUE BLUE BLACK JET BLACK

AVAILABLE SIZES

Size	8 10 12 14 16 18 (UK sizes)
Leg	30" 32" 34"
Cut	Boot High waist



CODE | RG-L-PM-BB

LADIES WARRIOR JEAN | LIGHTEST JEANS UTILISING PEKEV LITE DELIVERING ARMoured PROTECTION**FEATURES**

- ★ 60% PEKEV Lite® coverage
- ★ Thinner and lighter than standard PEKEV®
- ★ Abrasion resistance rating of 5.21 seconds
- ★ 11oz stretch Promodal outer denim
- ★ Wicking comfort inner mesh
- ★ 50% cooler than traditional denim with the use of a climate regulation agent in the denim
- ★ Anti-bacteria and softening agents in denim
- ★ Adjustable pockets for optional D30® armour
- ★ Skinny leg cut and high waist for ladies

COLOURS

BLUE BLACK

AVAILABLE SIZES

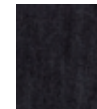
Size	6 8 10 12 14 16 18 (UK sizes)
Leg	30" 32" 34"
Cut	Skinny High waist

D30®
IMPACT PROTECTION

CODE | RG-L-CR

LADIES CAFE RACER | RELAXED HIGH-WAISTED ARMoured LADIES JEANS**FEATURES**

- ★ 60% PEKEV® coverage to the top of the boot
- ★ 12oz Seldedge denim, woven on a shuttle loom
- ★ Traditional five pockets
- ★ Comfort wicking mesh liner
- ★ Adjustable hip and knee pockets
- ★ CE approved D30® T5 Evo X hip and knee armour included
- ★ Relaxed denim fit
- ★ Skinny leg cut with a high waist

COLOURS

RAW SELVEDGE

AVAILABLE SIZES

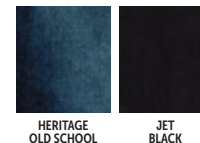
Size	8 10 12 14 16 18 (UK sizes)
Leg	32" 34"
Cut	Skinny High waist

D30®
IMPACT PROTECTION

CODE | RG-L-HT-OS | RG-L-HT-JB

LADIES HERITAGE | STYLISH LADIES JEANS DELIVERING STYLE AND COMFORT**FEATURES**

- ★ 60% PEKEV® coverage from the waist to the top of the boots
- ★ 13oz denim outer
- ★ Wicking mesh for rider comfort
- ★ 2.5" rise at back with double belt loop
- ★ Skinny leg cut with a high waist
- ★ Hip and knee pockets adjustable
- ★ CE approved D30® T5 Evo X hip and knee armour included

COLOURS

HERITAGE OLD SCHOOL JET BLACK

AVAILABLE SIZES

Size	8 10 12 14 16 18 (UK sizes)
Leg	32" 34"
Cut	Skinny High waist



CODE | RG-L-LEB-BLK

LADIES SARA JANE LEGGINGS | POLY DENIM LEGGINGS UTILISING PEKEV LITE DELIVERING ARMoured PROTECTION

FEATURES

- ★ 60% PEKEV Lite® coverage
- ★ Thinner and lighter than standard PEKEV®
- ★ Abrasion resistance rating of 5.21 seconds
- ★ Poly denim outer fabric
- ★ Wicking comfort inner mesh
- ★ External zip pockets for included D30® knee armour, hips optional
- ★ Wide waistband for comfort

COLOURS



BLACK

AVAILABLE SIZES

Size	6 8 10 12 14 16 18 (UK sizes)
Leg	30" 32"
Cut	Skinny stretch High waist



Back protector



Elbow protector Shoulder protector



Knee protector Hip protector

COLOURS



ORANGE

CODE | RG-M-ARMKIT-JN | RG-M-ARMKIT-JKT

RESURGENCE GEAR | D30 PROTECTIVE ARMOUR

FEATURES

All our products are either supplied with or have the option to include removable CE approved D30® T5 Evo X armour in knee, hip, elbow and shoulder, and D30® Viper Stealth back protectors.

The D30® T5 EVO X

Utilising the latest material innovation from D30 which offers increased durability. The parts continue to offer great impact protection whilst remaining low profile and lightweight. The range includes knee, hip, shoulder and elbow pads which are CE certified to level 1 across ambient, wet and cold conditions.

D30® T5 EVO X product features:

- ★ Manufactured in a highly durable material
- ★ CE certified to EN1621-1:2012
- ★ Level 1 in ambient, wet and cold conditions
- ★ Area A coverage
- ★ Temperature stable

D30® VIPER STEALTH

Benefiting from Airwave technology, the D30® Viper Stealth is an extremely flexible, low profile and lightweight back protector, whilst offering incredible protection.

D30® Viper Stealth product features:

- ★ D30® patented technology
- ★ Certified to exceed the performance requirements of EN1621- 2:2014, Level 1, including optional cold test at -10 degrees
- ★ For winter sports: certified as suitable for use at temperatures down to -20 degrees
- ★ Breathability and flexibility
- ★ Airwave Technology for improved airflow
- ★ Ergonomic design for comfort and protection
- ★ Full back protector offering maximum coverage
- ★ Thickness: 11mm

AVAILABLE SIZES

Back protector: Available in 4 different sizes, determined by torso length

WE ARE PROUD
TO INTRODUCE
THE NEW & LIMITED
FUEL APPAREL
COLLECTION.
DESIGNED AND
PRODUCED WITH CARE
AND LOVE FOR ALL THE
RIDERS AROUND
THE WORLD.



PROHIBIDO
FUMAR

CUBOS Nºs 427,428



PRODUCTS AVAILABLE IN UK ONLY



CODE | FM-TS-TGV-RAW-S | M | L | XL | XXL

FUEL MOTORCYLES | GLOVE T-SHIRTS | RAW**FEATURES**

- ★ T-shirt made of 100% cotton super combed with round neck
- ★ Front print plus back label and sleeve embroidery
- ★ LIMITED EDITION

COLOURS

OLD WHITE

AVAILABLE SIZES

S | M | L | XL | XXL



CODE | FM-TS-TGV-BLK-S | M | L | XL | XXL

FUEL MOTORCYLES | GLOVE T-SHIRTS | BLACK**FEATURES**

- ★ T-shirt made of 100% cotton super combed with round neck
- ★ Front print plus back label and sleeve embroidery

COLOURS

BLACK

AVAILABLE SIZES

S | M | L | XL | XXL



CODE | FM-TS-TWL-WHT-S | M | L | XL | XXL

FUEL MOTORCYLES | WELDER T-SHIRTS | WHITE**FEATURES**

- ★ T-shirt made of 100% cotton super combed with round neck
- ★ Front print plus sleeve embroidery

COLOURS

WHITE

AVAILABLE SIZES

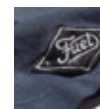
S | M | L | XL | XXL



CODE | FM-TS-TWL-GR-S | M | L | XL | XXL

FUEL MOTORCYLES | WELDER T-SHIRTS | INDIGO BLUE**FEATURES**

- ★ T-shirt made of 100% cotton super combed with round neck
- ★ Front print plus sleeve embroidery

COLOURS

INDIGO BLUE

AVAILABLE SIZES

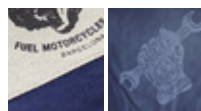
S | M | L | XL | XXL



CODE | FM-TS-TGV-LTD-IB-S | M | L | XL | XXL

FUEL MOTORCYCLES | GLOVE LIMITED T-SHIRTS
| INDIGO BLUE**FEATURES**

- ★ Stone washed T-shirt made of 100% cotton super combed with round neck
- ★ Front embroidery plus back print and label

COLOURS**AVAILABLE SIZES**

BLUE

S | M | L | XL | XXL



CODE | FM-TS-TSC-LTD-S | M | L | XL | XXL

FUEL MOTORCYCLES | SCRAM LIMITED T-SHIRTS
| OLIVE GREEN**FEATURES**

- ★ Stone washed T-shirt made of 100% cotton super combed with round neck
- ★ Front print plus arm label

COLOURS**AVAILABLE SIZES**

OLIVE

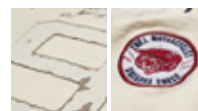
S | M | L | XL | XXL



CODE | FM-TS-TCS-LTD-S | M | L | XL | XXL

FUEL MOTORCYCLES | CORSE LIMITED T-SHIRTS
| OLD ENGLISH**FEATURES**

- ★ Stone washed T-shirt made of 100% cotton super combed with round neck
- ★ Front embroidery plus back print and label

COLOURS**AVAILABLE SIZES**

OLD WHITE

S | M | L | XL | XXL



CODE | FM-LTS-DES-S | M | L | XL | XXL

FUEL MOTORCYLES | DESERT LONG T-SHIRTS | OLD WHITE AND BLUE

FEATURES

- ★ High quality cotton
- ★ Round neck and long ribs
- ★ Front and rear print

COLOURS

AVAILABLE SIZES



OLD WHITE AND BLUE

S | M | L | XL | XXL



CODE | FM-LTS-53-S | M | L | XL | XXL

FUEL MOTORCYLES | 53 LONG T-SHIRTS | RED, WHITE AND BLUE

FEATURES

- ★ High quality cotton
- ★ Round neck and long ribs
- ★ Front and rear print

COLOURS

AVAILABLE SIZES



RED WHITE BLUE

S | M | L | XL | XXL



CODE | FM-LTS-STP-S | M | L | XL | XXL

FUEL MOTORCYLES | STRIPES LONG T-SHIRTS | BLACK AND WHITE

FEATURES

- ★ High quality cotton
- ★ Round neck and long ribs
- ★ Sleeves and front print

COLOURS

AVAILABLE SIZES



BLACK WHITE

S | M | L | XL | XXL



CODE | FM-LTS-LOG-S | M | L | XL | XXL

FUEL MOTORCYLES | LOGO LONG T-SHIRTS | GREEN AND WHITE

FEATURES

- ★ High quality cotton
- ★ Baseball style
- ★ Round neck and long ribs
- ★ Front print

COLOURS

AVAILABLE SIZES



GREEN WHITE

S | M | L | XL | XXL



CODE | FM-SS-DES-S | M | L | XL | XXL

FUEL MOTORCYLES | DESERT SWEATSHIRT | BLUE**FEATURES**

- ★ High quality cotton
- ★ Round neck and long ribs
- ★ Front print and shoulder patch

COLOURS**AVAILABLE SIZES**

BLUE

S | M | L | XL | XXL



CODE | FM-SS-BOR-S | M | L | XL | XXL

FUEL MOTORCYLES | BORDEAUX SWEATSHIRT | CLARET**FEATURES**

- ★ High quality cotton
- ★ Round neck and long ribs
- ★ Front print

COLOURS**AVAILABLE SIZES**

CLARET

S | M | L | XL | XXL



HOLY

**Free
dom**®

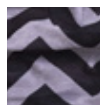
PRODUCTS AVAILABLE IN UK ONLY®



CODE | 1126

HOLY FREEDOM | BANDANA ALIEN**FEATURES**

- ★ Holy Freedom Tubular multi-functional bandana
- ★ Antibacterial treatment
- ★ Graphics Holy Freedom Original®

COLOURS

BLACK WHITE



CODE | 1777

HOLY FREEDOM | BANDANA STRETCH APACHE BLU**FEATURES**

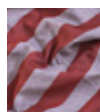
- ★ Stretch tubular multi-functional, accessories men and woman
- ★ Antibacterial treatment
- ★ Superior stretch, moisture management, lightweight
- ★ Graphics HolyFreedom® Original

COLOURSBLUE/WHITE/
BLACK

CODE | 1306

HOLY FREEDOM | BANDANA AMERICA**FEATURES**

- ★ Holy Freedom Tubular multi-functional bandana
- ★ Antibacterial treatment
- ★ Graphics Holy Freedom Original®

COLOURS

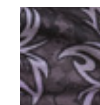
RED



CODE | 1122

HOLY FREEDOM | BANDANA AWAY BY NIGHT PRIMALOFT**FEATURES**

- ★ Holy Freedom Primaloft tubular multi-functional bandana
- ★ Antibacterial treatment
- ★ Fast drying, superior softness, moisture management, lightweight
- ★ Graphics Holy Freedom Original®

COLOURS

BLACK WHITE



CODE | 1301

HOLY FREEDOM | BANDANA AZURE CIROKI**FEATURES**

- ★ Holy Freedom tubular multi-functional bandana
- ★ Antibacterial treatment
- ★ Graphics Holy Freedom Original®

COLOURS

MULTICOLOUR



CODE | 1437

HOLY FREEDOM | BANDANA BULLIT BLUE PRIMALOFT**FEATURES**

- ★ Holy Freedom Primaloft tubular multi-functional bandana
- ★ Antibacterial treatment
- ★ Fast drying, superior softness, moisture management, lightweight
- ★ Graphics Holy Freedom Original®

COLOURS

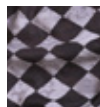
BLUE WHITE



CODE | 5002

HOLY FREEDOM | BANDANA BULLIT PRIMALOFT**FEATURES**

- ★ Holy Freedom Primaloft tubular multi-functional bandana
- ★ Antibacterial treatment
- ★ Fast drying, superior softness, moisture management, lightweight
- ★ Graphics Holy Freedom Original®

COLOURS

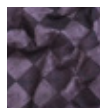
BLACK WHITE



CODE | 8005

HOLY FREEDOM | BANDANA BULLIT DARK**FEATURES**

- ★ Holy Freedom tubular multi-functional bandana
- ★ Antibacterial treatment
- ★ Graphics Holy Freedom Original®

COLOURS

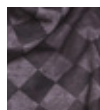
BLACK WHITE



CODE | 8015

HOLY FREEDOM | BANDANA POLAR BULLIT DARK**FEATURES**

- ★ Holy Freedom tube bandana with fleece lining, to keep you warm on colder days
- ★ Graphics Holy Freedom Original®

COLOURS

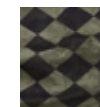
BLACK WHITE



CODE | 8016

HOLY FREEDOM | BANDANA BULLIT GREEN**FEATURES**

- ★ Holy Freedom tubular multi-functional bandana
- ★ Antibacterial treatment
- ★ Graphics Holy Freedom Original®

COLOURS

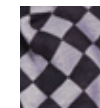
GREEN WHITE



CODE | 5001

HOLY FREEDOM | BANDANA POLAR BULLIT**FEATURES**

- ★ Holy Freedom tube bandana with fleece lining, to keep you warm on colder days
- ★ Graphics Holy Freedom Original®

COLOURS

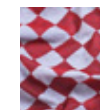
BLACK WHITE



CODE | 1306

HOLY FREEDOM | BANDANA BULLIT RED**FEATURES**

- ★ Holy Freedom tubular multi-functional bandana
- ★ Antibacterial treatment
- ★ Graphics Holy Freedom Original®

COLOURS

RED WHITE



CODE | 1774

HOLY FREEDOM | BANDANA STRETCH BUTTERFLY**FEATURES**

- ★ Stretch tubular multi-functional, accessories men and woman
- ★ Antibacterial treatment
- ★ Superior stretch, moisture management, lightweight
- ★ Graphics HolyFreedom® Original

COLOURS

WHITE



CODE | 8005

HOLY FREEDOM | BANDANA CAFE RACER**FEATURES**

- ★ Holy Freedom tubular multi-functional bandana
- ★ Antibacterial treatment
- ★ Graphics Holy Freedom Original®

COLOURS

BROWN STRIPE



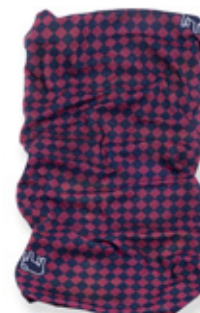
CODE | 8008

HOLY FREEDOM | BANDANA POLAR CAFE RACER**FEATURES**

- ★ Holy Freedom tube bandana with fleece lining, to keep you warm on colder days
- ★ Graphics Holy Freedom Original®

COLOURS

BROWN STRIPE



CODE | 1503

HOLY FREEDOM | BANDANA CARNABY PRIMALOFT**FEATURES**

- ★ Holy Freedom Primaloft tubular multi-functional bandana
- ★ Antibacterial treatment
- ★ Fast drying, superior softness, moisture management, lightweight
- ★ Graphics Holy Freedom Original®

COLOURS

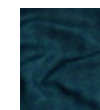
RED BLUE



CODE | 1780

HOLY FREEDOM | BANDANA CHELSEA PRIMALOFT**FEATURES**

- ★ Holy Freedom Primaloft tubular multi-functional bandana
- ★ Antibacterial treatment
- ★ Fast drying, superior softness, moisture management, lightweight
- ★ Graphics Holy Freedom Original®

COLOURS

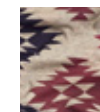
DARK GREEN



CODE | 1502

HOLY FREEDOM | BANDANA CHEYENNE PRIMALOFT**FEATURES**

- ★ Holy Freedom Primaloft tubular multi-functional bandana
- ★ Antibacterial treatment
- ★ Fast drying, superior softness, moisture management, lightweight
- ★ Graphics Holy Freedom Original®

COLOURS

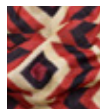
MULTICOLOUR



CODE | 1302

HOLY FREEDOM | BANDANA CIROKI RED**FEATURES**

- ★ Holy Freedom tubular multi-functional bandana
- ★ Antibacterial treatment
- ★ Graphics Holy Freedom Original®

COLOURS

MULTICOLOUR



CODE | 1779

HOLY FREEDOM | BANDANA STRETCH DARK SHOCK**FEATURES**

- ★ Stretch tubular multifunctional, accessories man and woman
- ★ Antibacterial treatment
- ★ Superior stretch, moisture management, lightweight
- ★ Graphics HolyFreedom® Original

COLOURS

BLACK/GREY



CODE | 1120

HOLY FREEDOM | BANDANA DAG-INSTITUTIONAL**FEATURES**

- ★ Holy Freedom tubular multi-functional bandana
- ★ Antibacterial treatment
- ★ Graphics Holy Freedom Original®

COLOURS

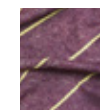
GREY LOGO



CODE | 1435

HOLY FREEDOM | BANDANA DIAGONAL PRIMALOFT**FEATURES**

- ★ Holy Freedom Primaloft tubular multi-functional bandana
- ★ Antibacterial treatment
- ★ Fast drying, superior softness, moisture management, lightweight
- ★ Graphics Holy Freedom Original®

COLOURS

RED YELLOW



CODE | 1603

HOLY FREEDOM | BANDANA DANGER PRIMALOFT**FEATURES**

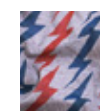
- ★ Holy Freedom Primaloft tubular multi-functional bandana
- ★ Antibacterial treatment
- ★ Fast drying, superior softness, moisture management, lightweight
- ★ Graphics Holy Freedom Original®

COLOURSBLACK WHITE
BEIGE

CODE | 1201

HOLY FREEDOM | BANDANA FRANCE PRIMALOFT**FEATURES**

- ★ Holy Freedom Primaloft tubular multi-functional bandana
- ★ Antibacterial treatment
- ★ Fast drying, superior softness, moisture management, lightweight
- ★ Graphics Holy Freedom Original®

COLOURS

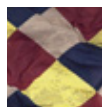
RED WHITE BLUE



CODE | 1506

HOLY FREEDOM | BANDANA FARROW PRIMALOFT**FEATURES**

- ★ Holy Freedom Primaloft Tubular multi-functional bandana
- ★ Antibacterial treatment
- ★ Fast drying, superior softness, moisture management, lightweight
- ★ Graphics Holy Freedom Original®

COLOURSRED BLUE YELLOW
WHITE

CODE | 1301

HOLY FREEDOM | BANDANA FLASH**FEATURES**

- ★ Holy Freedom tubular multi-functional bandana
- ★ Antibacterial treatment
- ★ Graphics Holy Freedom Original®

COLOURS

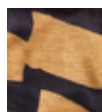
YELLOW BLACK



CODE | 1420

HOLY FREEDOM | BANDANA POLAR FLASH**FEATURES**

- ★ Holy Freedom tube bandana with fleece lining, to keep you warm on colder days
- ★ Graphics Holy Freedom Original®

COLOURS

YELLOW BLACK



CODE | 1439

HOLY FREEDOM | BANDANA POLAR FOLSOM**FEATURES**

- ★ Holy Freedom tube bandana with fleece lining, to keep you warm on colder days
- ★ Graphics Holy Freedom Original®

COLOURS

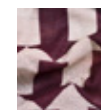
BLACK WHITE



CODE | 1304

HOLY FREEDOM | BANDANA FRECCIA**FEATURES**

- ★ Holy Freedom tubular multi-functional bandana
- ★ Antibacterial treatment
- ★ Graphics Holy Freedom Original®

COLOURS

BURGUNDY WHITE



CODE | 1602

HOLY FREEDOM | BANDANA GLEMSEK PRIMALOFT**FEATURES**

- ★ Holy Freedom Primaloft Tubular multi-functional bandana
- ★ Antibacterial treatment
- ★ Fast drying, superior softness, moisture management, lightweight
- ★ Graphics Holy Freedom Original®

COLOURS

BLACK



CODE | 1770

HOLY FREEDOM | BANDANA STRETCH GOLDEN**FEATURES**

- ★ Stretch tubular multifunctional, accessories man and woman
- ★ Antibacterial treatment
- ★ Superior stretch, moisture management, lightweight
- ★ Graphics HolyFreedom® Original

COLOURS

WHITE/GOLD



CODE | 1606

HOLY FREEDOM | BANDANA GOLDEN SKULL**FEATURES**

- ★ Holy Freedom tube bandana with fleece lining, to keep you warm on colder days
- ★ Graphics Holy Freedom Original®

COLOURS

BLACK BROWN



CODE | 1605

HOLY FREEDOM | BANDANA POLAR GOLDEN WOLF**FEATURES**

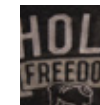
- ★ Holy Freedom tubular multi-functional bandana
- ★ Antibacterial treatment
- ★ Graphics Holy Freedom Original®

COLOURSBLACK WHITE
GOLD

CODE | 8007

HOLY FREEDOM | BANDANA GREATEST**FEATURES**

- ★ Holy Freedom tubular multi-functional bandana
- ★ Antibacterial treatment
- ★ Graphics Holy Freedom Original®

COLOURS

GREY LOGO



CODE | 1438

HOLY FREEDOM | BANDANA IGUANA PRIMALOFT**FEATURES**

- ★ Holy Freedom Primaloft tubular multi-functional bandana
- ★ Antibacterial treatment
- ★ Fast drying, superior softness, moisture management, lightweight
- ★ Graphics Holy Freedom Original®

COLOURS

MULTICOLOUR



CODE | 1308

HOLY FREEDOM | BANDANA I WANT YOU — CAMOU**FEATURES**

- ★ Holy Freedom tubular multi-functional bandana
- ★ Antibacterial treatment
- ★ Graphics Holy Freedom Original®

COLOURS

CAMO



CODE | 1783

HOLY FREEDOM | BANDANA JACK AND KAPPA**FEATURES**

- ★ Holy Freedom Tubular multi-functional bandana
- ★ Antibacterial treatment
- ★ Graphics Holy Freedom Original®

COLOURS

BLACK WHITE



CODE | 1785

HOLY FREEDOM | BANDANA KYAN PRIMALOFT**FEATURES**

- ★ Holy Freedom Primaloft tubular multi-functional bandana
- ★ Antibacterial treatment
- ★ Fast drying, superior softness, moisture management, lightweight
- ★ Graphics Holy Freedom Original®

COLOURS

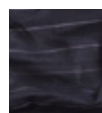
BLUE



CODE | 1122

HOLY FREEDOM | BANDANA LINEA**FEATURES**

- ★ Holy Freedom tubular multi-functional bandana
- ★ Antibacterial treatment
- ★ Graphics Holy Freedom Original®

COLOURS

GREY STRIPE



CODE | 1446

HOLY FREEDOM | BANDANA STRETCH MAICOL**FEATURES**

- ★ Stretch tubular multifunctional, accessories man and woman
- ★ Antibacterial treatment
- ★ Superior stretch, moisture management, lightweight
- ★ Graphics HolyFreedom® Original

COLOURS

WHITE BLACK



CODE | 1773

HOLY FREEDOM | BANDANA STRETCH MAICOL**FEATURES**

- ★ Stretch tubular multifunctional, accessories man and woman
- ★ Antibacterial treatment
- ★ Superior stretch, moisture management, lightweight
- ★ Graphics HolyFreedom® Original

COLOURS

BLACK WHITE



CODE | 1442

HOLY FREEDOM | BANDANA STRETCH MILITARY ALLOVER**FEATURES**

- ★ Stretch tubular multifunctional, accessories man and woman
- ★ Antibacterial treatment
- ★ Superior stretch, moisture management, lightweight
- ★ Graphics HolyFreedom® Original

COLOURS

LIGHT GREEN



CODE | 1305

HOLY FREEDOM | BANDANA NAVAHO**FEATURES**

- ★ Holy Freedom tubular multi-functional bandana
- ★ Antibacterial treatment
- ★ Graphics Holy Freedom Original®

COLOURS

MULTICOLOUR



CODE | 1306

HOLY FREEDOM | BANDANA OBELIX**FEATURES**

- ★ Holy Freedom tubular multi-functional bandana
- ★ Antibacterial treatment
- ★ Graphics Holy Freedom Original®

COLOURS

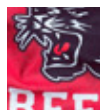
BLUE WHITE



CODE | 1784

HOLY FREEDOM | BANDANA PANTHER PRIMALOFT**FEATURES**

- ★ Holy Freedom Primaloft tubular multi-functional bandana
- ★ Antibacterial treatment
- ★ Fast drying, superior softness, moisture management, lightweight
- ★ Graphics Holy Freedom Original®

COLOURS

RED BLACK



CODE | 1124

HOLY FREEDOM | BANDANA POIS BROWN**FEATURES**

- ★ Holy Freedom tubular multi-functional bandana
- ★ Antibacterial treatment
- ★ Graphics Holy Freedom Original®

COLOURS

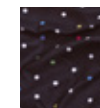
BROWN DOTS



CODE | 1123

HOLY FREEDOM | BANDANA POIS MULTICOLOR**FEATURES**

- ★ Holy Freedom tubular multi-functional bandana
- ★ Antibacterial treatment
- ★ Graphics Holy Freedom Original®

COLOURS

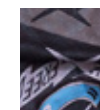
BLACK DOTS



CODE | 1307

HOLY FREEDOM | BANDANA POKER**FEATURES**

- ★ Holy Freedom tubular multi-functional bandana
- ★ Antibacterial treatment
- ★ Graphics Holy Freedom Original®

COLOURS

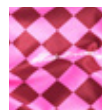
MULTICOLOUR



CODE | 1776

HOLY FREEDOM | BANDANA STRETCH PUSSY CAT**FEATURES**

- ★ Stretch tubular multifunctional, accessories man and woman
- ★ Antibacterial treatment
- ★ Superior stretch, moisture management, lightweight
- ★ Graphics HolyFreedom® Original

COLOURS

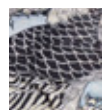
RED/PINK



CODE | 1436

HOLY FREEDOM | BANDANA RAPACE PRIMALOFT**FEATURES**

- ★ Holy Freedom Primaloft tubular multi-functional bandana
- ★ Antibacterial treatment
- ★ Fast drying, superior softness, moisture management, lightweight
- ★ Graphics Holy Freedom Original®

COLOURS

MULTICOLOUR



CODE | 1772

HOLY FREEDOM | BANDANA STRETCH RISK**FEATURES**

- ★ Stretch tubular multifunctional, accessories man and woman
- ★ Antibacterial treatment
- ★ Superior stretch, moisture management, lightweight
- ★ Graphics HolyFreedom® Original

COLOURS

BLUE/GREEN



CODE | 1202

HOLY FREEDOM | BANDANA SAETTA**FEATURES**

- ★ Holy Freedom Tubular multi-functional bandana
- ★ Antibacterial treatment
- ★ Graphics Holy Freedom Original®

COLOURS

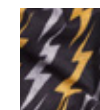
YELLOW WHITE BROWN



CODE | 1204

HOLY FREEDOM | BANDANA POLAR SAETTA**FEATURES**

- ★ Holy Freedom tube bandana with fleece lining, to keep you warm on colder days
- ★ Graphics Holy Freedom Original®

COLOURS

WHITE BROWN YELLOW



CODE | 1778

HOLY FREEDOM | BANDANA SHOCK**FEATURES**

- ★ Stretch tubular multifunctional, accessories man and woman
- ★ Antibacterial treatment
- ★ Superior stretch, moisture management, lightweight
- ★ Graphics HolyFreedom® Original

COLOURS

RED/BLUE



CODE | 1422

HOLY FREEDOM | BANDANA SIDEBURN FLASH GREEN**FEATURES**

- ★ Holy Freedom tubular multi-functional bandana
- ★ Antibacterial treatment
- ★ Graphics Holy Freedom Original®

COLOURS

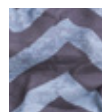
GREEN BLACK



CODE | 1125

HOLY FREEDOM | BANDANA SKY**FEATURES**

- ★ Holy Freedom tubular multi-functional bandana
- ★ Antibacterial treatment
- ★ Graphics Holy Freedom Original®

COLOURS

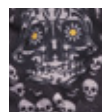
BLUE GREY



CODE | 8011

HOLY FREEDOM | BANDANA POLAR SKULL**FEATURES**

- ★ Holy Freedom tube bandana with fleece lining, to keep you warm on colder days
- ★ Graphics Holy Freedom Original®

COLOURS

BLACK WHITE



CODE | 8001

HOLY FREEDOM | BANDANA SKULL**FEATURES**

- ★ Holy Freedom tubular multi-functional bandana
- ★ Antibacterial treatment
- ★ Graphics Holy Freedom Original®

COLOURS

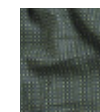
BLACK WHITE



CODE | 1127

HOLY FREEDOM | BANDANA SNOB**FEATURES**

- ★ Holy Freedom tubular multi-functional bandana
- ★ Antibacterial treatment
- ★ Graphics Holy Freedom Original®

COLOURS

GREEN



CODE | 1607

HOLY FREEDOM | BANDANA STILE**FEATURES**

- ★ Holy Freedom tubular multi-functional bandana
- ★ Antibacterial treatment
- ★ Graphics Holy Freedom Original®

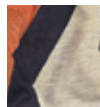
COLOURS

BLUE GREEN

CODE | 1440

HOLY FREEDOM | BANDANA POLAR STORM**FEATURES**

- ★ Holy Freedom tube bandana with fleece lining, to keep you warm on colder days
- ★ Graphics Holy Freedom Original®

COLOURSORANGE BLACK
WHITE

CODE | 8004

HOLY FREEDOM | BANDANA ST.QUENTIN**FEATURES**

- ★ Holy Freedom Tubular multi-functional bandana
- ★ Antibacterial treatment
- ★ Graphics Holy Freedom Original®

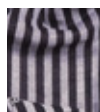
COLOURS

BLACK WHITE

CODE | 8014

HOLY FREEDOM | BANDANA POLAR ST QUENTIN**FEATURES**

- ★ Holy Freedom tube bandana with fleece lining, to keep you warm on colder days
- ★ Graphics Holy Freedom Original®

COLOURS

BLACK WHITE

CODE | 1441

HOLY FREEDOM | BANDANA POLAR TIGER**FEATURES**

- ★ Holy Freedom tube bandana with fleece lining, to keep you warm on colder days
- ★ Graphics Holy Freedom Original®

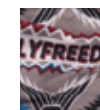
COLOURS

BLACK WHITE

CODE | 1501

HOLY FREEDOM | BANDANA TOMAHAWK PRIMALOFT**FEATURES**

- ★ Holy Freedom Primaloft tubular multi-functional bandana
- ★ Antibacterial treatment
- ★ Fast drying, superior softness, moisture management, lightweight
- ★ Graphics Holy Freedom Original®

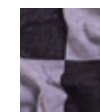
COLOURS

MULTICOLOUR

CODE | 8006

HOLY FREEDOM | BANDANA TON UP**FEATURES**

- ★ Holy Freedom Tubular multi-functional bandana
- ★ Antibacterial treatment
- ★ Graphics Holy Freedom Original®

COLOURS

BLACK WHITE



CODE | 1504

HOLY FREEDOM | BANDANA TROPICO PRIMALOFT**FEATURES**

- ★ Holy Freedom Primaloft tubular multi-functional bandana
- ★ Antibacterial treatment
- ★ Fast drying, superior softness, moisture management, lightweight
- ★ Graphics Holy Freedom Original®

COLOURS

MULTICOLOUR



CODE | 1505

HOLY FREEDOM | BANDANA UK PRIMALOFT**FEATURES**

- ★ Holy Freedom Primaloft tubular multi-functional bandana
- ★ Antibacterial treatment
- ★ Fast drying, superior softness, moisture management, lightweight
- ★ Graphics Holy Freedom Original®

COLOURS

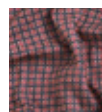
RED WHITE BLUE



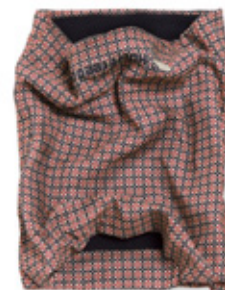
CODE | 8002

HOLY FREEDOM | BANDANA VELOCE**FEATURES**

- ★ Holy Freedom Tubular multi-functional bandana
- ★ Antibacterial treatment
- ★ Graphics Holy Freedom Original®

COLOURS

RED



CODE | 1205

HOLY FREEDOM | BANDANA POLAR VELOCE**FEATURES**

- ★ Holy Freedom tube bandana with fleece lining, to keep you warm on colder days
- ★ Graphics Holy Freedom Original®

COLOURS

RED



CODE | 1203

HOLY FREEDOM | BANDANA VENICE**FEATURES**

- ★ Holy Freedom Tubular multi-functional bandana
- ★ Antibacterial treatment
- ★ Graphics Holy Freedom Original®

COLOURS

RED WHITE



CODE | 1604

HOLY FREEDOM | BANDANA POLAR WILLIAM HARLEY**FEATURES**

- ★ Holy Freedom tube bandana with fleece lining, to keep you warm on colder days
- ★ Graphics Holy Freedom Original®

COLOURS

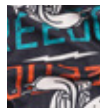
BLACK ORANGE



CODE | 1601

HOLY FREEDOM | BANDANA WOLF PRIMALOFT**FEATURES**

- ★ Holy Freedom Primaloft tubular multi-functional bandana
- ★ Antibacterial treatment
- ★ Fast drying, superior softness, moisture management, lightweight
- ★ Graphics HolyFreedom® Original®

COLOURSORNAGE GREEN
WHITE

CODE | 1444

HOLY FREEDOM | BANDANA STRETCH WRENCH**FEATURES**

- ★ Stretch tubular multifunctional, accessories man and woman
- ★ Antibacterial treatment
- ★ Superior stretch, moisture management, lightweight
- ★ Graphics HolyFreedom® Original

COLOURS

BLACK WHITE



CODE | 1443

HOLY FREEDOM | BANDANA STRETCH WRENCH ALLOVER**FEATURES**

- ★ Stretch tubular multifunctional, accessories man and woman
- ★ Antibacterial treatment
- ★ Superior stretch, moisture management, lightweight
- ★ Graphics HolyFreedom® Original

COLOURS

BLACK WHITE



CODE | 1445

HOLY FREEDOM | BANDANA STRETCH WRENCH STRIPES**FEATURES**

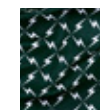
- ★ Stretch tubular multifunctional, accessories man and woman
- ★ Antibacterial treatment
- ★ Superior stretch, moisture management, lightweight
- ★ Graphics HolyFreedom® Original

COLOURSDRAK RED
DARK BLUE

CODE | 1781

HOLY FREEDOM | BANDANA ZETA GREEN PRIMALOFT**FEATURES**

- ★ Holy Freedom Primaloft tubular multi-functional bandana
- ★ Antibacterial treatment
- ★ Fast drying, superior softness, moisture management, lightweight
- ★ Graphics Holy Freedom Original®

COLOURS

DARK GREEN



CODE | 1775

HOLY FREEDOM | BANDANA STRETCH ZETA RED**FEATURES**

- ★ Stretch tubular multifunctional, accessories man and woman
- ★ Antibacterial treatment
- ★ Superior stretch, moisture management, lightweight
- ★ Graphics HolyFreedom® Original

COLOURS

RED

CODE | 09C01

HOLY FREEDOM | GARAGE CAP**FEATURES**

- ★ Traditional trucker hat
- ★ 100% Cotton front panel & peak
- ★ 100% Polyester mesh rear panels
- ★ Snapback size adjuster
- ★ Graphics Holy Freedom® Original

COLOURS

BLACK WHITE

CODE | 11C02

HOLY FREEDOM | GREEN GARAGE CAP**FEATURES**

- ★ Traditional trucker hat
- ★ 100% Cotton front panel & peak
- ★ 100% Polyester mesh rear panels
- ★ Snapback size adjuster
- ★ Graphics Holy Freedom® Original

COLOURS

GREEN WHITE

CODE | 09C03

HOLY FREEDOM | MUD CAP**FEATURES**

- ★ Traditional trucker hat
- ★ 100% Cotton front panel & peak
- ★ 100% Polyester mesh rear panels
- ★ Snapback size adjuster
- ★ Graphics Holy Freedom® Original

COLOURS

BLACK

BORDEAUX

BROWN

CODE | 11C01

HOLY FREEDOM | RED GARAGE CAP**FEATURES**

- ★ Traditional trucker hat
- ★ 100% Cotton front panel & peak
- ★ 100% Polyester mesh rear panels
- ★ Snapback size adjuster
- ★ Graphics Holy Freedom® Original

COLOURS

BLACK

CODE | 11C05

HOLY FREEDOM | WORKER CAP**FEATURES**

- ★ Traditional trucker hat
- ★ 100% Cotton front panel & peak
- ★ 100% Polyester mesh rear panels
- ★ Snapback size adjuster
- ★ Graphics Holy Freedom® Original

COLOURS

BLUE YELLOW



CODE | 10011-S | M | L | XL | XXL | XXXL

HOLY FREEDOM | ANGELS GREEN T-SHIRT**FEATURES**

- ★ Holy Freedom custom t-shirt, 100% cotton, European fit
- ★ Institutional logo on the back, with contrast stitching on the side
- ★ HF logo on the left sleeve
- ★ Graphics Holy Freedom Original®

COLOURS**AVAILABLE SIZES**

GRREN

BACK
DESIGN

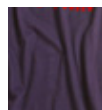
S | M | L | XL | XXL | XXXL



CODE | 3003-S | M | L | XL | XXL | XXXL

HOLY FREEDOM | BEER T-SHIRT**FEATURES**

- ★ Holy Freedom custom t-shirt, 100% cotton, European fit
- ★ Institutional logo on the back, with contrast stitching on the side
- ★ HF logo on the left sleeve
- ★ Graphics Holy Freedom Original®

COLOURS**AVAILABLE SIZES**

PURPLE

S | M | L | XL | XXL | XXXL



CODE | 10004-S | M | L | XL | XXL | XXXL

HOLY FREEDOM | BETTY T-SHIRT**FEATURES**

- ★ Holy Freedom custom t-shirt, 100% cotton, European fit
- ★ Institutional logo on the back, with contrast stitching on the side
- ★ HF logo on the left sleeve
- ★ Graphics Holy Freedom Original®

COLOURS**AVAILABLE SIZES**

BLACK

BACK
DESIGN

S | M | L | XL | XXL | XXXL



CODE | 10016-S | M | L | XL | XXL | XXXL

HOLY FREEDOM | HF RED T-SHIRT**FEATURES**

- ★ Holy Freedom custom t-shirt, 100% cotton, European fit
- ★ Institutional logo on the back, with contrast stitching on the side
- ★ HF logo on the left sleeve
- ★ Graphics Holy Freedom Original®

COLOURS**AVAILABLE SIZES**

RED

BACK
DESIGN

S | M | L | XL | XXL | XXXL



CODE | 10009-S | M | L | XL | XXL | XXXL

HOLY FREEDOM | HOLY BLUE T-SHIRT**FEATURES**

- ★ Holy Freedom custom t-shirt, 100% cotton, European fit
- ★ Institutional logo on the back, with contrast stitching on the side
- ★ HF logo on the left sleeve
- ★ Graphics Holy Freedom Original®

COLOURS**AVAILABLE SIZES**

BLUE

BACK DESIGN

S | M | L | XL | XXL | XXXL



CODE | 10001-S | M | L | XL | XXL | XXXL

HOLY FREEDOM | LEONIDA T-SHIRT**FEATURES**

- ★ Tees
- ★ Holy Freedom custom t-shirt, 100% cotton, European fit
- ★ Institutional logo on the back, with contrast stitching on the side
- ★ HF logo on the left sleeve
- ★ Graphics Holy Freedom Original®

COLOURS**AVAILABLE SIZES**

CREAM

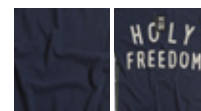
S | M | L | XL | XXL | XXXL



CODE | 10014-S | M | L | XL | XXL | XXXL

HOLY FREEDOM | OFFICINA T-SHIRT**FEATURES**

- ★ Holy Freedom custom t-shirt, 100% cotton, European fit
- ★ Institutional logo on the back, with contrast stitching on the side
- ★ HF logo on the left sleeve
- ★ Graphics Holy Freedom Original®

COLOURS**AVAILABLE SIZES**

BLUE

BACK DESIGN

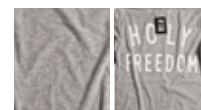
S | M | L | XL | XXL | XXXL



CODE | 10020-S | M | L | XL | XXL | XXXL

HOLY FREEDOM | OFFICINA GREY T-SHIRT**FEATURES**

- ★ Holy Freedom custom long sleeve t-shirt, 100% cotton, European fit
- ★ Institutional logo on the back. In contrast stitching on the side
- ★ HF logo on the left sleeve
- ★ Graphics Holy Freedom Original®

COLOURS**AVAILABLE SIZES**

GREY

BACK DESIGN

S | M | L | XL | XXL | XXXL



CODE | 10012-S | M | L | XL | XXL | XXXL

HOLY FREEDOM | RATTER GREEN T-SHIRT**FEATURES**

- ★ Holy Freedom custom t-shirt, 100% cotton, European fit
- ★ Institutional logo on the back, with contrast stitching on the side
- ★ HF logo on the left sleeve
- ★ Graphics Holy Freedom Original®

COLOURS**AVAILABLE SIZES**

GREEN

BACK
DESIGN

S | M | L | XL | XXL | XXXL



CODE | 10003-S | M | L | XL | XXL | XXXL

HOLY FREEDOM | RATTER WHITE T-SHIRT**FEATURES**

- ★ Holy Freedom custom t-shirt, 100% cotton, European fit
- ★ Institutional logo on the back, with contrast stitching on the side
- ★ HF logo on the left sleeve
- ★ Graphics Holy Freedom Original®

COLOURS**AVAILABLE SIZES**

WHITE

S | M | L | XL | XXL | XXXL



CODE | 10015-S | M | L | XL | XXL | XXXL

HOLY FREEDOM | SKULL RED T-SHIRT**FEATURES**

- ★ Holy Freedom custom t-shirt, 100% cotton, European fit
- ★ Institutional logo on the back, with contrast stitching on the side
- ★ HF logo on the left sleeve
- ★ Graphics Holy Freedom Original®

COLOURS**AVAILABLE SIZES**

RED

BACK
DESIGN

S | M | L | XL | XXL | XXXL



CODE | 10006-S | M | L | XL | XXL | XXXL

HOLY FREEDOM | WOLF GREY T-SHIRT**FEATURES**

- ★ Holy Freedom custom t-shirt, 100% cotton, European fit
- ★ Institutional logo on the back, with contrast stitching on the side
- ★ HF logo on the left sleeve
- ★ Graphics Holy Freedom Original®

COLOURS**AVAILABLE SIZES**

GREY

BACK
DESIGN

S | M | L | XL | XXL | XXXL

CODE | 10021-S | M | L | XL | XXL | XXXL

HOLY FREEDOM | WOLF WHITE LONG SLEEVE T-SHIRT**FEATURES**

- ★ Holy Freedom custom long sleeve t-shirt, 100% cotton, European fit
- ★ Institutional logo on the back. In contrast stitching on the side
- ★ HF logo on the left sleeve
- ★ Graphics Holy Freedom Original®

COLOURS

CREAM

AVAILABLE SIZES

S | M | L | XL | XXL | XXXL

CODE | 90023-L | M | S | XL | XXL | XXXL

HOLY FREEDOM | COLLEGE SWEATSHIRT**FEATURES**

- ★ Holy Freedom custom sweatshirt. 100% cotton, European fit
- ★ WINDSTOPPER internal membrane in the bust
- ★ Institutional logo on the hood, with contrast stitching on the side
- ★ Graphics Holy Freedom Original®

COLOURS

GREY

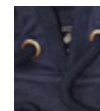
AVAILABLE SIZES

S | M | L | XL | XXL | XXXL

CODE | 11224-S | M | L | XL | XXL | XXXL

HOLY FREEDOM | CORONA HOODIE**FEATURES**

- ★ Holy Freedom custom sweatshirt. 100% cotton, European fit
- ★ WINDSTOPPER internal membrane in the bust
- ★ Institutional logo on the hood, with contrast stitching on the side
- ★ Graphics Holy Freedom Original®

COLOURS

DARK BLUE

AVAILABLE SIZES

S | M | L | XL | XXL | XXXL

CODE | 11226-S | M | L | XL | XXL | XXXL

HOLY FREEDOM | ITALIA HOODIE**FEATURES**

- ★ Holy Freedom custom sweatshirt. 100% cotton, European fit
- ★ WINDSTOPPER internal membrane in the bust
- ★ Institutional logo on the hood, with contrast stitching on the side
- ★ Graphics Holy Freedom Original®

COLOURS

SKY BLUE

AVAILABLE SIZES

S | M | L | XL | XXL | XXXL



CODE | 11227-S | M | L | XL | XXL | XXXL

HOLY FREEDOM | OLD SCHOOL HOODIE**FEATURES**

- ★ Holy Freedom custom sweatshirt. 100% cotton, European fit
- ★ WINDSTOPPER internal membrane in the bust
- ★ Institutional logo on the hood, with contrast stitching on the side
- ★ Graphics Holy Freedom Original®

COLOURS**AVAILABLE SIZES**

GREEN

S | M | L | XL | XXL | XXXL



CODE | 90022-L | M | S | XL | XXL | XXXL

HOLY FREEDOM | SHINING HOODIE**FEATURES**

- ★ Holy Freedom custom sweatshirt. 100% cotton, European fit
- ★ WINDSTOPPER internal membrane in the bust
- ★ Institutional logo on the hood, with contrast stitching on the side
- ★ Graphics Holy Freedom Original®

COLOURS**AVAILABLE SIZES**

GREY

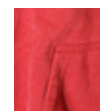
S | M | L | XL | XXL | XXXL



CODE | 90021-L | M | S | XL | XXL | XXXL

HOLY FREEDOM | SHOTGUN RED HOODIE**FEATURES**

- ★ Holy Freedom custom sweatshirt. 100% cotton, European fit
- ★ WINDSTOPPER internal membrane in the bust
- ★ Institutional logo on the hood, with contrast stitching on the side
- ★ Graphics Holy Freedom Original®

COLOURS**AVAILABLE SIZES**

RED

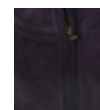
S | M | L | XL | XXL | XXXL



CODE | 11221-S | M | L | XL | XXL | XXXL

HOLY FREEDOM | TRE SAETTE HOODIE**FEATURES**

- ★ Holy Freedom custom sweatshirt. 100% cotton, European fit
- ★ WINDSTOPPER internal membrane in the bust
- ★ Institutional logo on the hood, with contrast stitching on the side
- ★ Graphics Holy Freedom Original®

COLOURS**AVAILABLE SIZES**

BLACK

S | M | L | XL | XXL | XXXL



PRODUCTS AVAILABLE IN UK AND EUROPE



CODE | OR94-TS-BC-S | M | L | XL | XXL

OILY RAG CLOTHING | BICYCLE CLUB T-SHIRT**FEATURES**

- ★ Oily Rag Clothing Bicycle Club retro tour inspired design soft peach finish blue colour t-shirt
- ★ A classic racing bicycle design with speedsters motif
- ★ Distressed look design, screen printed on a pre-shrunk 100% cotton, 205gsm seamless shirt

COLOURS

BLUE

AVAILABLE SIZES

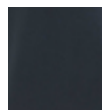
S | M | L | XL | XXL



CODE | OR119-TS-BAS-S | M | L | XL | XXL

OILY RAG CLOTHING | BIKE ART SPECIALIST T-SHIRT**FEATURES**

- ★ An artists written open face helmet design for the cool café racer riders
- ★ A denim blue 100% organic cotton shirt with a cream screen printed design

COLOURS

BLUE

AVAILABLE SIZES

S | M | L | XL | XXL



CODE | OR10-TS-BKE-S | M | L | XL | XXL

OILY RAG CLOTHING | BIKE T-SHIRT**FEATURES**

- ★ Oily Rag Clothing Bike retro style grey brushed organic soft cotton t-shirt, the tee for riders of shed built café racer custom motorcycles

COLOURS

GREY

AVAILABLE SIZES

S | M | L | XL | XXL



CODE | OR-143-BUR-TS-BOB-S | M | L | XL | XXL

OR-143-G-TS-BOB-S | M | L | XL | XXL

OR-143-W-TS-BOB-S | M | L | XL | XXL

OILY RAG CLOTHING | MOTORCYCLE BOBBERWORKS**FEATURES**

- ★ Fashionable Oily Rag Motorcycle Sales T Shirt.
- ★ 100% organic cotton in coffee

COLOURS

WHITE

GREY

BURGUNDY

AVAILABLE SIZES

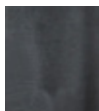
S | M | L | XL | XXL



CODE | OR85-TS-BR14-S | M | L | XL | XXL

OILY RAG CLOTHING | BONNEVILLE RACING 14 T-SHIRT (2 SIDED)**FEATURES**

- ★ This Oily Rag Clothing t-shirt is a tribute to glory or bust days of the Bonneville Salt Flats in Utah
- ★ This superb quality tee is screen printed both side and is as cool as they come

COLOURS**AVAILABLE SIZES**

CHARCOAL

S | M | L | XL | XXL



CODE | OR70-TS-ORCR-S | M | L | XL | XXL

OILY RAG CLOTHING | CAFÉ RACER T-SHIRT**FEATURES**

- ★ Oily Rag Clothing Café Racer retro motorcycle design soft peach finish charcoal grey t-shirt
- ★ A super cool café racer motorcycle design screen printed on a charcoal tee

COLOURS**AVAILABLE SIZES**

CHARCOAL

S | M | L | XL | XXL



CODE | OR123-TS-CW-S | M | L | XL | XXL

OILY RAG CLOTHING | CHAIN WAX T-SHIRT**FEATURES**

- ★ A hark back to the old school packaging labels for motorcycle lubricants
- ★ A light grey 100% organic cotton shirt with a multi colour screen printed design

COLOURS**AVAILABLE SIZES**

GREY

S | M | L | XL | XXL



CODE | OR71-TS-ORCL-S | M | L | XL | XXL

OILY RAG CLOTHING | CLASSIC T-SHIRT**FEATURES**

- ★ A charcoal tee with a classic Oily Rag Clothing off white design

COLOURS**AVAILABLE SIZES**

CHARCOAL

S | M | L | XL | XXL



CODE | OR68-TS-CB-S | M | L | XL | XXL

OILY RAG CLOTHING | CROSS BONES T-SHIRT**FEATURES**

- ★ Skull and cross bones design incorporating an Oily Rag Motorcycles font in red
- ★ Distressed look design. Screen printed on a pre-shrunk 100% cotton, 205gsm seamless shirt. Double stitched sleeve and waist hem. Colour denim blue

COLOURS

BLUE

AVAILABLE SIZES

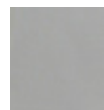
S | M | L | XL | XXL



CODE | OR108-TS-FTKR-S | M | L | XL | XXL

OILY RAG CLOTHING | FLAT TRACKER T-SHIRT**FEATURES**

- ★ Oily Rag Clothing Flat Tracker retro style grey brushed organic soft cotton t-shirt. Inspired by high speed dirt! A traditional Oily Rag design for Flat Track racing

COLOURS

GREY

AVAILABLE SIZES

S | M | L | XL | XXL



CODE | OR34-TS-F8-S | M | L | XL | XXL

OILY RAG CLOTHING | FLYING 8 T-SHIRT**FEATURES**

- ★ Oily Rag Clothing Flying 8 retro motorcycle design soft peach finish dusky blue t-shirt
- ★ A shirt from the days when the motorcycle manufacture Coventry Eagle manufactured the Flying 8. This shirt can be seen worn by Henry Cole on the Travel Channel

COLOURS

BLUE

AVAILABLE SIZES

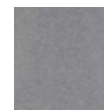
S | M | L | XL | XXL



CODE | OR96-TS-HRG-S | M | L | XL | XXL

OILY RAG CLOTHING | HOT RODS T-SHIRT**FEATURES**

- ★ Oily Rag Clothing Hot Rods retro style charcoal grey brushed soft cotton t-shirt, harking back to 1950's US 4 wheel customising!

COLOURS

CHARCOAL

AVAILABLE SIZES

S | M | L | XL | XXL



CODE | OR97-TS-HRS-S | M | L | XL | XXL

OILY RAG CLOTHING | HOT ROD GARAGE T-SHIRT**FEATURES**

- ★ Oily Rag Clothing Hot Rod Garage design grey brushed cotton t-shirt. For those into their classic old skool American custom built cars

COLOURS

DARK GREY

AVAILABLE SIZES

S | M | L | XL | XXL



CODE | OR145-TS-G-S | M | L | XL | XXL

OR145-TS-C-S | M | L | XL | XXL

OR145-TS-W-S | M | L | XL | XXL

OILY RAG CLOTHING | JAPAN**FEATURES**

- ★ A classic Oily Rag design for real petrol heads
- ★ Distressed look design, screen printed on a pre-shrunk, 100% cotton, 205gsm seamless shirt
- ★ Double stitched sleeve and waist hem. Colour black with grey print

COLOURS

GREY

CREAM

WHITE

AVAILABLE SIZES

S | M | L | XL | XXL



CODE | OR316-TS-LGD-S | M | L | XL | XXL

OILY RAG CLOTHING | LEGEND T-SHIRT**FEATURES**

- ★ A homage to racing legend, Barry Sheene. Sheene was famous for wearing the number 7 and displayed a duck design on his helmet
- ★ Distressed look design
- ★ Print transfer on a Pre-shrunk, 100% cotton, 195gsm seamless shirt. Double stitched sleeve and waist hem

COLOURS

CHARCOAL

AVAILABLE SIZES

S | M | L | XL | XXL



CODE | OR100-TS-LB-S | M | L | XL | XXL

OILY RAG CLOTHING | LONGBOARDS T-SHIRT**FEATURES**

- ★ Oily Rag Clothing Long Boards retro inspired surfer design soft peach finish charcoal colour t-shirt
- ★ A tribute to the Hawaiian wave riders, screen printed on a charcoal tee

COLOURS

CHARCOAL

AVAILABLE SIZES

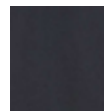
S | M | L | XL | XXL



CODE | OR92-TS-MCO-S | M | L | XL | XXL

OILY RAG CLOTHING | MOTOR CO T-SHIRT**FEATURES**

- ★ Oily Rag Clothing retro styled motorcycle Motor Co t-shirt, finished in soft peach dark blue t-shirt

COLOURS

NAVY

AVAILABLE SIZES

S | M | L | XL | XXL



CODE | OR67-TS-MC-S | M | L | XL | XXL

OILY RAG CLOTHING | MOTORCYCLE CLUB T-SHIRT**FEATURES**

- ★ Oily Rag Motorcycle Club design
- ★ Screen printed with a orange ink on a black cotton tee

COLOURS

BLACK

AVAILABLE SIZES

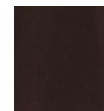
S | M | L | XL | XXL



CODE | OR118-TS-MCS-S | M | L | XL | XXL

OILY RAG CLOTHING | MOTORCYCLE SALES T-SHIRT**FEATURES**

- ★ The sign to follow to buy your proper British motorcycle
- ★ A brown 100% organic cotton shirt with a cream screen printed design

COLOURS

BROWN

AVAILABLE SIZES

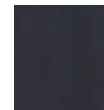
S | M | L | XL | XXL



CODE | OR80-TS-ORP-S | M | L | XL | XXL

OILY RAG CLOTHING | PISTON T-SHIRT**FEATURES**

- ★ Straight out of the Oily Rag workshop
- ★ Distressed look design
- ★ Printed on a Pre-shrunk, 100% organic cotton, Navy tee with cream print

COLOURS

NAVY

AVAILABLE SIZES

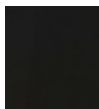
S | M | L | XL | XXL



CODE | OR117-TS-OMC-S | M | L | XL | XXL

OILY RAG CLOTHING | MOTOR CO T-SHIRT**FEATURES**

- ★ Featuring the Oily Rag Triumph bobber
- ★ A black 100% organic cotton shirt with a cream screen printed design

COLOURS

BLACK

AVAILABLE SIZES

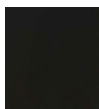
S | M | L | XL | XXL



CODE | OR114-TS-ORMI-S | M | L | XL | XXL

OILY RAG CLOTHING | MOTORS INC T-SHIRT**FEATURES**

- ★ Oily Rag Clothing's Motors Inc. retro style black brushed organic soft cotton t-shirt. The sugar skull every biker needs

COLOURS

BLACK

AVAILABLE SIZES

S | M | L | XL | XXL



CODE | OR156-TS-BK-S | M | L | XL | XXL

OR156-TS-BL-S | M | L | XL | XXL

OILY RAG CLOTHING | RACER**FEATURES**

- ★ A classic Oily Rag design for real petrol heads
- ★ Distressed look design, screen printed on a pre-shrunk, 100% cotton, 205gsm seamless shirt

- ★ Double stitched sleeve and waist hem. Colour black with grey print

COLOURS

BLACK

DARK BLUE

AVAILABLE SIZES

S | M | L | XL | XXL



CODE | OR51-TS-ORR-S | M | L | XL | XXL

OILY RAG CLOTHING | RACING T-SHIRT**FEATURES**

- ★ This Tee was originally printed for the riders / racers we support on the dirt and tarmac, also worn by Dan Cooper during at the world famous Isle of Man TT
- ★ They are a dark grey Tee screen printed with a distressed look. Just the job for the track or wearing casually

COLOURS

GREY

AVAILABLE SIZES

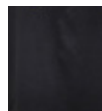
S | M | L | XL | XXL



CODE | OR103-TS-SFB-S | M | L | XL | XXL

OILY RAG CLOTHING | SALT FLATS BOBBER T-SHIRT**FEATURES**

- ★ Salt Flats Bobber
- ★ Oily Rag Clothing Salt Flats Bobber design soft peach finish black T-shirt
- ★ This tee shirt is a tribute to the glory or bust days of the Bonneville Salt Flats in Utah
- ★ Quality screen printed tee pictured with the Oily Rag Triumph T100

COLOURS

BLACK

AVAILABLE SIZES

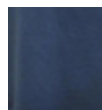
S | M | L | XL | XXL



CODE | OR102-TS-SB-S | M | L | XL | XXL

OILY RAG CLOTHING | SHED BUILD T-SHIRT**FEATURES**

- ★ Oily Rag Clothing Shed Build retro motorcycle design soft peach finish blue t-shirt.
- ★ This Oily Rag Clothing shirt is for all lovers of shed built and cafe racer motorcycles

COLOURS

DENIM

AVAILABLE SIZES

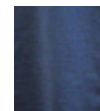
S | M | L | XL | XXL



CODE | OR94-TS-SKATE-S | M | L | XL | XXL

OILY RAG CLOTHING | SKATE CO T-SHIRT**FEATURES**

- ★ Oily Rag Clothing Skate retro inspired soft peach finish blue colour t-shirt
- ★ The cool retro Californian Skater tee, screen printed on a blue tee

COLOURS

DENIM

AVAILABLE SIZES

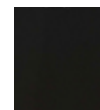
S | M | L | XL | XXL



CODE | OR2-TS-ST-S | M | L | XL | XXL

OILY RAG CLOTHING | SKULL AND TON-UP SPEEDO T-SHIRT**FEATURES**

- ★ Oily Rag Clothing Ton Up Skull retro motorcycle design soft peach finish black colour t-shirt
- ★ A classic skull design with a ton-up speedo and chequered flags, typical of 50's & 60's British motorcycling. Distressed look design, screen print

COLOURS

BLACK

AVAILABLE SIZES

S | M | L | XL | XXL



CODE | OR88-TS-SF-S | M | L | XL | XXL

OILY RAG CLOTHING | SPANNER FIST T-SHIRT**FEATURES**

★ Oily Rag t-shirt showing the spanner fist. A great t-shirt for Motorcycle, Hot Rod or Car enthusiasts

★ The cool retro petrol heads tee, screen printed on a blue tee

COLOURS

DENIM

AVAILABLE SIZES

S | M | L | XL | XXL



CODE | OR83-TS-ORSS-S | M | L | XL | XXL

OILY RAG CLOTHING | SPEED SHOP T-SHIRT**FEATURES**

★ Oily Rag Speed Shop produces super cool one off motorcycles from a workshop in Middle England. This cool tee feels at home in the workshop, on the road or showing off to the ladies

COLOURS

DENIM

AVAILABLE SIZES

S | M | L | XL | XXL



CODE | OR99-TS-SURF-S | M | L | XL | XXL

OILY RAG CLOTHING | SURF T-SHIRT**FEATURES**

★ Oily Rag Clothing Surf retro inspired long boards surfer design soft peach finish linen colour t-shirt

★ A super cool Surfer Long Boards design screen printed on a linen tee

COLOURS

LINEN

AVAILABLE SIZES

S | M | L | XL | XXL

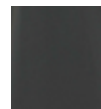


CODE | OR101-TS-SC-S | M | L | XL | XXL

OILY RAG CLOTHING | SURF COMPETITION T-SHIRT**FEATURES**

★ Oily Rag Clothing Surf Competition retro inspired long board surfer design soft peach finish charcoal colour t-shirt

★ The Oily Rag vintage Californian Surf Competition tee, for the big wave riders, screen printed on a charcoal tee.

COLOURS

GREY

AVAILABLE SIZES

XS | S | M | L | XXL



CODE | OR-24-TS-TDC-S | M | L | XL | XXL

OILY RAG CLOTHING | TDC T-SHIRT**FEATURES**

- ★ A t-shirt perfect for any garage die hard.
- ★ Oily Rag garage Timing Disc design screen printed onto a 100% organic cotton white shirt

COLOURS

WHITE

AVAILABLE SIZES

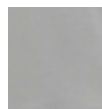
S | M | L | XL | XXL



CODE | OR-116-TS-TDF-S | M | L | XL | XXL

OILY RAG CLOTHING | TOUR DE FRANCE T-SHIRT**FEATURES**

- ★ If you love cycling then this is the tee for you
- ★ A light grey 100% cotton shirt with a screen printed cycling design

COLOURS

GREY

AVAILABLE SIZES

S | M | L | XL | XXL

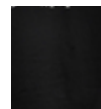


CODE | OR6-TS-VCC-S | M | L | XL | XXL

OILY RAG CLOTHING | VINTAGE CAFÉ RACER T-SHIRT**FEATURES**

- ★ Oily Rag Clothing Vintage Café Racer retro motorcycle design soft peach finish black colour t-shirt

- ★ The popular British motorcycle café racer design. Distressed look design, screen printed on a pre-shrunk 100% cotton, 205gsm seamless

COLOURS

BLACK

AVAILABLE SIZES

S | M | L | XL | XXL



CODE | OR87-TS-MT-S | M | L | XL | XXL

OILY RAG CLOTHING | VINTAGE MOTORS T-SHIRT**FEATURES**

- ★ Oily Rag Clothing Vintage Motors a cool retro motorcycle design soft peach finish linen colour t-shirt with a two colour screen print

COLOURS

LINEN

AVAILABLE SIZES

S | M | L | XL | XXL



CODE | OR7-TS-VSBBCR-B-S | M | L | XL | XXL

OILY RAG CLOTHING | VINTAGE SUCK SQUEEZE BANG BLOW CAFÉ RACER T-SHIRT**FEATURES**

- ★ Oily Rag Clothing Suck Squeeze Bang Blow retro motorcycle design soft peach finish black colour t-shirt
- ★ A reference to the basic process of a four stroke internal combustion engine. Suck Squeeze Bang Blow is an exclusive

COLOURS

BLACK

AVAILABLE SIZES

S | M | L | XL | XXL



CODE | OR54-TS-WP-S | M | L | XL | XXL

OILY RAG CLOTHING | WINGED PLUG T-SHIRT**FEATURES**

- ★ A classic Oily Rag design for real petrol heads
- ★ Distressed look design, screen printed on a pre-shrunk, 100% cotton, 205gsm seamless shirt
- ★ Double stitched sleeve and waist hem. Colour black with grey print

COLOURS

BLACK

AVAILABLE SIZES

S | M | L | XL | XXL



CODE | OR26-TS-BK-S | M | L | XL | XXL

OR26-TS-G-S | M | L | XL | XXL

OR26-TS-C-S | M | L | XL | XXL

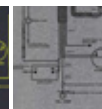
OR26-TS-W-S | M | L | XL | XXL

OILY RAG CLOTHING | WIRING DIAGRAM**FEATURES**

- ★ A classic Oily Rag design for real petrol heads
- ★ Distressed look design, screen printed on a pre-shrunk, 100% cotton, 205gsm seamless shirt
- ★ Double stitched sleeve and waist hem. Colour black with grey print

COLOURS

BLACK



GREY



CREAM



WHITE

AVAILABLE SIZES

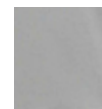
S | M | L | XL | XXL



CODE | OR115-TS-FS1E-S | M | L | XL | XXL

OILY RAG CLOTHING | YAMAHA FS1-E (THE FIZZY) T-SHIRT**FEATURES**

- ★ Yamaha FS1-E (the Fizzy) t-shirt
- ★ The Yamaha FS1-E was the iconic moped of the 70's, every young mans dream possession, the smart phone of its day if you like. The design in this tee will take you right back
- ★ A light grey 100% organic cotton shirt with a two colour screen printed design

COLOURS

GREY

AVAILABLE SIZES

S | M | L | XL | XXL



CODE | OR10-BT-B-M | OR10-BT-B-L | OR10-BT-B-XL

OILY RAG CLOTHING | OIL BELT**FEATURES**

- ★ Rugged look belt made from the best quality English leather
- ★ Embossed with a Oily Rag logo

COLOURS

BLACK

AVAILABLE SIZES

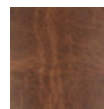
M	L	XL
34 - 38	38 - 42	40 - 44



CODE | OR1R-BT-T-M | OR1R-BT-T-L | OR1R-BT-T-XL

OILY RAG CLOTHING | RUST BELT**FEATURES**

- ★ Rugged look belt made from the best quality English leather
- ★ Embossed with a Oily Rag logo

COLOURS

BROWN

AVAILABLE SIZES

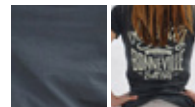
M	L	XL
34 - 38	38 - 42	40 - 44



CODE | OR85L-TS-BR14-S | M | L | OXL

OILY RAG CLOTHING | LADIES BONNEVILLE RACING 14 T-SHIRT**FEATURES**

- ★ This Oily Rag Clothing t-shirt is a tribute to glory or bust days of the Bonneville Salt Flats in Utah
- ★ This superb quality tee is screen printed both side and is as cool as they come

COLOURS

DARK GREY

AVAILABLE SIZES

S	M	L	XL
10	12	14	16



CODE | OR109L-TS-BKE-P-S | P-M | P-L | P-XL | G-S | G-M | G-L | G-XL

OILY RAG CLOTHING | LADIES BIKE T-SHIRT**FEATURES**

- ★ Oily Rag Clothing Ladies Bobber Bike retro motorcycle design soft peach finish grey colour ladies t-shirt
- ★ This unique for ladies design screen printed on a pre-shrunk 100% cotton, 205gsm seamless shirt, double stitched sleeve and waist

COLOURS

PINK

GREY

AVAILABLE SIZES

S	M	L	XL
10	12	14	16



CODE | OR31L-LTS-LGDV-S | M | L

OILY RAG CLOTHING | LADIES LEGEND VEST**FEATURES**

- ★ A homage to racing legend, Barry Sheene. Sheene was famous for wearing the number 7 and displayed a duck design on his helmet
- ★ Distressed look design. Print transfer on a Pre-shrunk, 100% cotton, 195gsm seamless vest. Double stitched sleeve and waist hem

COLOURS

WHITE

AVAILABLE SIZES

XS	S	M	L	XL
8	10	12	14	16



CODE | OR67L-TS-MCO-S

OILY RAG CLOTHING | LADIES MOTORCYCLE CLUB T-SHIRT**FEATURES**

- ★ Oily Rag Ladies Motorcycle Club design
- ★ Screen printed with a blue ink on a linen cotton tee

COLOURS

LINEN

AVAILABLE SIZES

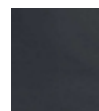
S	M	L	XL
10	12	14	16



CODE | OR114L-LV-ORMI-S | M | L | XL

OILY RAG CLOTHING | LADIES MOTORS INC VEST**FEATURES**

- ★ Oily Rag Clothing Motors Inc. retro motorcycle design soft peach finish black colour ladies vest with sugar skull design
- ★ Screen printed on a pre-shrunk 100% cotton, 205gsm seamless shirt, double stitched sleeve and waist hem

COLOURS

BLACKO

AVAILABLE SIZES

S	M	L	XL
8	10	12	14



CODE | OR107-LTS-SNORC-XS | S | M | L | XL

OILY RAG CLOTHING | LADIES OILY RAG CO T-SHIRT**FEATURES**

- ★ Oily Rag Clothing vintage washed Charcoal 100% organic cotton Jersey 155g/m²
- ★ Printed with the classic Oily Rag Co design. this jersey is fantastic quality and feels great

COLOURS

CHARCOAL

AVAILABLE SIZES

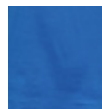
XS	S	M	L	XL
8	10	12	14	16



CODE | OR105-LTS-SNMC-XS | S | M | L | XL

OILY RAG CLOTHING | LADIES SCOOPED NECK MOTOR CO T-SHIRT**FEATURES**

- ★ Oily Rag Clothing retro styled motorcycle Motor Co t-shirt, finished in soft peach blue scooped neck t-shirt

COLOURS

BLUE

AVAILABLE SIZES

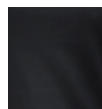
XS	S	M	L	XL
6	8	10	12	14



CODE | OR76L-TS-SSBB-S | M | L | XL

OILY RAG CLOTHING | LADIES SUCK SQUEEZE BANG BLOW T-SHIRT**FEATURES**

- ★ Black Tee printed with the classic trademarked SSBB design
- ★ This jersey is fantastic quality and feels great
- ★ A reference to the basic process of a four stroke internal combustion engine. Suck Squeeze Bang Blow

COLOURS

BLACK

AVAILABLE SIZES

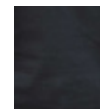
S	M	L	XL
10	12	14	16



CODE | OR7-LV-VSBB-CR-B-S | M | L | XL

OILY RAG CLOTHING | LADIES SUCK SQUEEZE BANG BLOW CAFÉ RACER VEST**FEATURES**

- ★ Oily Rag Clothing trademarked Suck Squeeze Bang Blow retro motorcycle design soft peach finish black colour ladies vest
- ★ A reference to the basic process of a four stroke internal combustion engine. Suck Squeeze Bang Blow

COLOURS

BLACK

AVAILABLE SIZES

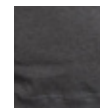
S	M	L	XL
10	12	14	16



CODE | ORL-S-SSBB-S | M | L | XL

OILY RAG CLOTHING | LADIES SUCK SQUEEZE BANG BLOW SWEATSHIRT**FEATURES**

- ★ Oily Rag Clothing trademarked Suck Squeeze Bang Blow retro motorcycle design on a 100% Combed Organic Cotton Sweatshirt. Loopback 3-Ply 280g
- ★ A reference to the basic process of a four stroke internal combustion engine. Suck Squeeze Bang Blow

COLOURS

CHARCOAL

AVAILABLE SIZES

S	M	L	XL
10	12	14	16



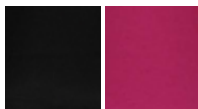
CODE | BLACK OR65-LTS-SSBBH-B-S | M | L | XL | XXL
PINK OR65-LTS-SSBBH-P-S | M | L | XL | XXL

OILY RAG CLOTHING | LADIES SUCK SQUEEZE BANG BLOW HEART T-SHIRT

FEATURES

- ★ Oily Rag Clothing trademarked Suck Squeeze Bang Blow Heart retro motorcycle design soft peach finish black colour ladies t-shirt
- ★ A reference to the basic process of a four stroke internal combustion engine. Suck Squeeze Bang Blow

COLOURS



BLACK

PINK

AVAILABLE SIZES

S	M	L	XL
10	12	14	16



CODE | OR106L-TS-KISS-S | M | L | XL

OILY RAG CLOTHING | KISS SSBB T-SHIRT

FEATURES

- ★ Oily Rag Clothing trademarked Suck Squeeze Bang Blow with a Kiss retro motorcycle design soft peach finish white colour ladies t-shirt
- ★ A reference to the basic process of a four stroke internal combustion engine. Suck Squeeze Bang Blow is an exclusive trademark to Oily Rag Clothing
- ★ Screen printed on a pre-shrunk 100% cotton, 205gsm seamless shirt, double stitched sleeve and waist hem

COLOURS



WHITE

AVAILABLE SIZES

S	M	L	XL
10	12	14	16



CODE | OR48-LTS-SSBB-S | M | L | XL

OILY RAG CLOTHING | LADIES SUCK SQUEEZE BANG BLOW RELAX T-SHIRT

FEATURES

- ★ Oily Rag Clothing trademarked Suck Squeeze Bang Blow Relax retro motorcycle design soft peach finish white colour ladies t-shirt
- ★ A reference to the basic process of a four stroke internal combustion engine. Suck Squeeze Bang Blow

COLOURS



WHITE

AVAILABLE SIZES

S	M	L	XL
10	12	14	16



CODE | OR48-LV-SSBB-S | M | L

OILY RAG CLOTHING | LADIES SUCK SQUEEZE BANG BLOW RELAX VEST

FEATURES

- ★ Oily Rag Clothing trademarked Suck Squeeze Bang Blow retro motorcycle design soft peach finish white colour ladies vest
- ★ A reference to the basic process of a four stroke internal combustion engine. Suck Squeeze

COLOURS



WHITE

AVAILABLE SIZES

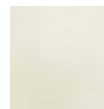
S	M	L	XL
10	12	14	16



CODE | OR99L-TS-SURF-S | M | L | XL | XXL

OILY RAG CLOTHING | LADIES SURF T-SHIRT**FEATURES**

- ★ Oily Rag Clothing Ladies Surf retro inspired long boards surfer design soft peach finish linen colour t-shirt
- ★ A super cool Surfer Long Boards design screen printed on a linen tee

COLOURS

LINEN

AVAILABLE SIZES

S	M	L	XL
10	12	14	16



CODE | ORHP-B-B-S | M | L | XL

OILY RAG CLOTHING | SUCK SQUEEZE BANG BLOW REAR PRINT LADIES BOXER SHORT**FEATURES**

- ★ Ladies Boxer Shorts with Oily Rag's trademarked phrase "Suck Squeeze Bang Blow" across the back
- ★ 45% combed cotton 45% modal 10% Lycra Elastane.

COLOURS

BLACK

AVAILABLE SIZES

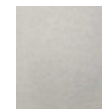
S	M	L	XL
6	8	10	12



CODE | OR154-H-BMT-S | M | L | XL | XXL

OILY RAG CLOTHING | BRITISH MOTORCYCLE TRIALS SWEAT TOP UNISEX**FEATURES**

- ★ A pullover vintage look unbrushed fleece with a screen printed design
- ★ 85% Organic ring-spun combed cotton 15% Polyester. 300gsm

COLOURS

GREY

AVAILABLE SIZES

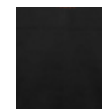
S	M	L	XL	XXL
---	---	---	----	-----



CODE | OR67H-H-MC-S | M | L | XL | XXL

OILY RAG CLOTHING | MOTORCYCLE CLUB HOODIE UNISEX**FEATURES**

- ★ A pullover black Hoodie with a orange vintage look Oily Rag screen printed design

COLOURS

BLACK

AVAILABLE SIZES

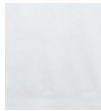
S	M	L	XL	XXL
---	---	---	----	-----



CODE | OR114H-H-MI-S | M | L | XL | XXL

OILY RAG CLOTHING | MOTORS INC. HOODIE UNISEX**FEATURES**

- ★ A light grey pullover hoodie with a light charcoal vintage look Oily Rag screen printed design. A great hoodie for Motorcycle, Hot rod and car enthusiasts

COLOURS

WHITE

AVAILABLE SIZES

S | M | L | XL | XXL



CODE | OR150L-S-MOT | S | M | L | XL

OILY RAG CLOTHING | MOTO SWEATSHIRT**FEATURES**

- ★ Long sleeve sweatshirt

COLOURSCREAM
BURGUNDY**AVAILABLE SIZES**XS | S | M | L | XL
8 | 10 | 12 | 14 | 16

CODE | OR151-LS-MOT-XS | S | M | L | XL

OILY RAG CLOTHING | MOTO BASEBALL SWEATSHIRT**FEATURES**

- ★ 3/4 length sleeves sweatshirt

COLOURS

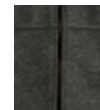
WHITE BLACK

AVAILABLE SIZESXS | S | M | L | XL
8 | 10 | 12 | 14 | 16

CODE | OR120H-H-REG-S | M | L | XL | XXL

OILY RAG CLOTHING | REGISTERED TRADEMARK HOODIE**FEATURES**

- ★ A pullover hoodie unbrushed fleece with a screen printed design
- ★ 85% Organic ring-spun combed cotton 15% Polyester. 300gsm

COLOURS

GREY

AVAILABLE SIZES

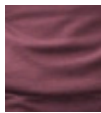
S | M | L | XL | XXL



CODE | ORH83-H-SS-S | M | L | XL | XXL

OILY RAG CLOTHING | SPEED SHOP HOODIE UNISEX**FEATURES**

- ★ Oily Rag Speed Shop produces super cool one off motorcycles from a workshop in Middle England. This cool Unisex hoodie feels at home in the workshop, on the road or cafe, on a 80% Combed Organic Cotton 20% Polyester Sweatshirt

COLOURS

BURGUNDY

AVAILABLE SIZES

S | M | L | XL | XXL



CODE | OR109S-LS-B0B-S | M | L | XL

OILY RAG CLOTHING | LADIES BOBBER SWEATSHIRT**FEATURES**

- ★ A pullover sweatshirt unbrushed fleece with a screen printed design
- ★ 85% Organic ring-spun combed cotton 15% Polyester. 300gsm

COLOURS

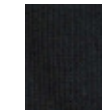
GREY

AVAILABLE SIZES

S | M | L | XL | XXL



CODE | OR-B

OILY RAG CLOTHING | BEANIE**COLOURS**

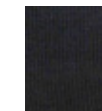
BLACK

AVAILABLE SIZES

One size



CODE | OR-WB

OILY RAG CLOTHING | WINGED BEANIE**COLOURS**

BLACK

AVAILABLE SIZES

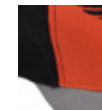
One size



CODE | OR5-BC-FW-B0

OILY RAG CLOTHING | FLYING WINGS CAP**FEATURES**

- ★ Cotton front panel embroidered with a Oily Rag flying wings design
- ★ Retro style snapback etched size adjuster

COLOURSBLACK ORANGE
GREY**AVAILABLE SIZES**

One size



CODE | OR3-BC-OC-GR

OILY RAG CLOTHING | OIL & CLOTH CAP**FEATURES**

- ★ Cotton front panel embroidered with a Oily Rag spark plug logo and oil & cloth design
- ★ Retro style snapback etched size adjuster

COLOURS**AVAILABLE SIZES**

GREY

One size



CODE | OR3-BC-MFG-BK

OILY RAG CLOTHING | MFG CAP**FEATURES**

- ★ Cotton front panel embroidered with a Oily Rag manufacturing design
- ★ Retro style snapback etched size adjuster

COLOURS**AVAILABLE SIZES**

BLACK GREY

One size



CODE | OR1-TG-SS-B

OILY RAG CLOTHING | SPEED SHOP TRUCKER CAP**FEATURES**

- ★ Oily Rag Clothing Speed Shop trucker cap
- ★ 100% Cotton front panel embroidered with a Oily Rag Speed design and 100% Nylon mesh rear panel
- ★ Retro style snapback size adjuster

COLOURS**AVAILABLE SIZES**

BROWN

One size



CODE | OR2-BC-ST-GN

OILY RAG CLOTHING | SPEED TRIALS CAP**FEATURES**

- ★ Cotton front panel embroidered with a Oily Rag British motorcycle speed trials design
- ★ Retro style snapback etched size adjuster

COLOURS**AVAILABLE SIZES**

GREEN

One size



CODE | ORG-BC-ST-B

OILY RAG CLOTHING | SPEED TRIAL TRUCKER CAP**FEATURES**

- ★ 100% Cotton front panel embroidered with a Oily Rag Speed Trails design
- ★ 100% Nylon mesh rear panel
- ★ Retro style snapback size adjuster

COLOURS

BROWN

AVAILABLE SIZES

One size



CODE | ORTS1

OILY RAG CLOTHING | SSBB ALLOY SIGN**FEATURES**

- ★ Oily Rag original design
- ★ Printed on to alloy plates
- ★ Perfect for home or workshop decoration

AVAILABLE SIZESA4 (297x210mm)
with pre-drilled holes

CODE | OR-WB

OILY RAG CLOTHING | SPARK PLUG ALLOY SIGN**COLOURS**

- ★ Oily Rag original design
- ★ Printed on to alloy plates
- ★ Perfect for home or workshop decoration

AVAILABLE SIZESA4 (297x210mm)
with pre-drilled holes

CODE | OR-B

OILY RAG CLOTHING | OIL CAN ALLOY SIGN**COLOURS**

- ★ Oily Rag original design
- ★ Printed on to alloy plates
- ★ Perfect for home or workshop decoration

AVAILABLE SIZESA4 (297x210mm)
with pre-drilled holes

CODE | OR-WB

OILY RAG CLOTHING | MOTOR CO ALLOY SIGN**COLOURS**

- ★ Oily Rag original design
- ★ Printed on to alloy plates
- ★ Perfect for home or workshop decoration

AVAILABLE SIZESA4 (297x210mm)
with pre-drilled holes



CODE | OR-B

OILY RAG CLOTHING | HOT ROD ALLOY SIGN**COLOURS**

- ★ Oily Rag original design
- ★ Printed on to alloy plates
- ★ Perfect for home or workshop decoration

AVAILABLE SIZES

A4 (297x210mm)
with pre-drilled holes



CODE | OR-WB

OILY RAG CLOTHING | ADDICTIVE ALLOY SIGN**COLOURS**

- ★ Oily Rag original design
- ★ Printed on to alloy plates
- ★ Perfect for home or workshop decoration

AVAILABLE SIZES

A4 (297x210mm)
with pre-drilled holes



CODE | OR-B

OILY RAG CLOTHING | BIKE ALLOY SIGN**COLOURS**

- ★ Oily Rag original design
- ★ Printed on to alloy plates
- ★ Perfect for home or workshop decoration

AVAILABLE SIZES

A4 (297x210mm)
with pre-drilled holes



CODE | OR-WB

OILY RAG CLOTHING | SALT FLAT ALLOY SIGN**COLOURS**

- ★ Oily Rag original design
- ★ Printed on to alloy plates
- ★ Perfect for home or workshop decoration

AVAILABLE SIZES

A4 (297x210mm)
with pre-drilled holes



CODE | ORTS1

OILY RAG CLOTHING | FIZZY ALLOY SIGN**FEATURES**

- ★ Oily Rag original design
- ★ Printed on to alloy plates
- ★ Perfect for home or workshop decoration

AVAILABLE SIZES

A4 (297x210mm)
with pre-drilled holes



CODE | OR-WB

OILY RAG CLOTHING | BIKE CRAFT ALLOY SIGN**COLOURS**

- ★ Oily Rag original design
- ★ Printed on to alloy plates
- ★ Perfect for home or workshop decoration

AVAILABLE SIZES

A4 (297x210mm)
with pre-drilled holes



CODE | OR-B

OILY RAG CLOTHING | SHED BUILT ALLOY SIGN**COLOURS**

- ★ Oily Rag original design
- ★ Printed on to alloy plates
- ★ Perfect for home or workshop decoration

AVAILABLE SIZES

A4 (297x210mm)
with pre-drilled holes



CODE | OR-WB

OILY RAG CLOTHING | SPANNER FIST ALLOY SIGN**COLOURS**

- ★ Oily Rag original design
- ★ Printed on to alloy plates
- ★ Perfect for home or workshop decoration

AVAILABLE SIZES

A4 (297x210mm)
with pre-drilled holes



CODE | OR-B

OILY RAG CLOTHING | PETROL HEAD ALLOY SIGN**COLOURS**

- ★ Oily Rag original design
- ★ Printed on to alloy plates
- ★ Perfect for home or workshop decoration

AVAILABLE SIZES

A4 (297x210mm)
with pre-drilled holes



CODE | OR-WB

OILY RAG CLOTHING | BOBBER WORKS ALLOY SIGN**COLOURS**

- ★ Oily Rag original design
- ★ Printed on to alloy plates
- ★ Perfect for home or workshop decoration

AVAILABLE SIZES

A4 (297x210mm)
with pre-drilled holes



CODE | OR-B

OILY RAG CLOTHING | OIL AND CLOTH SIGN**COLOURS**

- ★ Oily Rag original design
- ★ Printed on to alloy plates
- ★ Perfect for home or workshop decoration

AVAILABLE SIZES

A4 (297x210mm)
with pre-drilled holes



CODE | OR-WB

OILY RAG CLOTHING | MOTORS INC ALLOY SIGN**COLOURS**

- ★ Oily Rag original design
- ★ Printed on to alloy plates
- ★ Perfect for home or workshop decoration

AVAILABLE SIZES

A4 (297x210mm)
with pre-drilled holes



CODE | ORTS1

OILY RAG CLOTHING | TON UP ALLOY SIGN**FEATURES**

- ★ Oily Rag original design
- ★ Printed on to alloy plates
- ★ Perfect for home or workshop decoration

AVAILABLE SIZES

A4 (297x210mm)
with pre-drilled holes



CODE | OR-WB

OILY RAG CLOTHING | LEGEND ALLOY SIGN**COLOURS**

- ★ Oily Rag original design
- ★ Printed on to alloy plates
- ★ Perfect for home or workshop decoration

AVAILABLE SIZES

A4 (297x210mm)
with pre-drilled holes



CODE | OR-B

OILY RAG CLOTHING | DUNE BUG ALLOY SIGN**COLOURS**

- ★ Oily Rag original design
- ★ Printed on to alloy plates
- ★ Perfect for home or workshop decoration

AVAILABLE SIZES

A4 (297x210mm)
with pre-drilled holes



CODE | OR-WB

OILY RAG CLOTHING | RATTY ALLOY SIGN**COLOURS**

- ★ Oily Rag original design
- ★ Printed on to alloy plates
- ★ Perfect for home or workshop decoration

AVAILABLE SIZES

A4 (297x210mm)
with pre-drilled holes



CODE | OR-B

OILY RAG CLOTHING | LANDY ALLOY SIGN**COLOURS**

- ★ Oily Rag original design
- ★ Printed on to alloy plates
- ★ Perfect for home or workshop decoration

AVAILABLE SIZES

A4 (297x210mm)
with pre-drilled holes



CODE | OR-WB

OILY RAG CLOTHING | DUBS ALLOY SIGN**COLOURS**

- ★ Oily Rag original design
- ★ Printed on to alloy plates
- ★ Perfect for home or workshop decoration

AVAILABLE SIZES

A4 (297x210mm)
with pre-drilled holes



CODE | OR-B

OILY RAG CLOTHING | SURF BIKE ALLOY SIGN**COLOURS**

- ★ Oily Rag original design
- ★ Printed on to alloy plates
- ★ Perfect for home or workshop decoration

AVAILABLE SIZES

A4 (297x210mm)
with pre-drilled holes



SEGARIBALDI

PRODUCTS AVAILABLE IN UK ONLY



CODE | 8435403938285 | 8292 | 8308 | 8315 | 8322 | 8339
8435403938216 | 8223 | 8230 | 8247 | 8254 | 8261

GARIBALDI | BULLRIDER HERITAGE MENS JACKET

FEATURES

- ★ Leather jacket made of extra supple cowskin leather with a definitely retro look
- ★ Buffalo oily timber 0,9-1 mm vintage, tough yet super soft leather
- ★ Equipped with detachable CE homologated YF armours on both shoulders and elbows
- ★ Sleeveless detachable thermal inner lining for better comfort over all the seasons

COLOURS



BLACK

BROWN

AVAILABLE SIZES

S	M	L	XL	XXL	XXXL
38"	40"	42"	44"	46"	48"



CODE | 8435403926459 | 466 | 473 | 480 | 497 | 503
8435403930234 | 241 | 258 | 265 | 272 | 289 | 296 | 302 | 319

GARIBALDI | FOX-T JACKET

FEATURES

- ★ An urban designer jacket with a classic style and advanced safety features
- ★ H.T.N-Cord 330D fabric
- ★ CE Certified EN1621-1 Powertector® protectors to shoulders and elbows, foam back protector
- ★ Reissa® breathable, windproof and waterproof membrane

COLOURS



BLACK

GREY

AVAILABLE SIZES

BLACK	S	M	L	XL	XXL	XXL			
GREY	XXXS	XXS	XS	S	M	L	XL	XXL	XXXL



CODE | OLIVE 8435403938353 | 8360 | 8377 | 8384 | 8391 | 8407
NAVY 8435403938421 | 8438 | 8445 | 8452 | 8469 | 8476

GARIBALDI | HERITAGE 1972 OLIVE WAX COTTON MENS JACKET

FEATURES

- ★ A classic revival of the Original Garibaldi waterproof jacket, with detachable protectors and lining, a modern take on this classic style
- ★ CE certified to EN17092 for protective motorcycle garments
- ★ Wax style coated cotton
- ★ Reissa® breathable, windproof and waterproof membrane
- ★ CE EN1621-1 Powertector® protectors to shoulders and elbows, foam back protector

COLOURS



OLIVE

NAVY

AVAILABLE SIZES

S	M	L	XL	XXL	XXXL
38"	40"	42"	44"	46"	48"



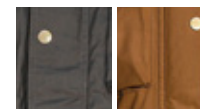
CODE | 8435403924912 | 929 | 936 | 943 | 950 | 967
8435403933228 | 235 | 242 | 259 | 266 | 273

GARIBALDI | HERITAGE 1972 BLACK WAX COTTON MENS JACKET

FEATURES

- ★ A classic revival of the Original Garibaldi waterproof jacket, with detachable protectors and lining, a modern take on this classic style
- ★ Wax style coated cotton
- ★ Reissa® breathable, windproof and waterproof membrane
- ★ CE EN1621-1 Powertector® protectors to shoulders and elbows, foam back protector

COLOURS



BLACK

BROWN

AVAILABLE SIZES

S	M	L	XL	XXL	XXXL
38"	40"	42"	44"	46"	48"



CODE | 8435403936649 | 656 | 663 | 670 | 687 | 694

GARIBALDI | MOKA RACER JACKET | BLACK**FEATURES**

- ★ High quality vintage style leather jacket with a refreshing, modern touch. Leather drum dyed for a homogeneous tone
- ★ Detachable thermal lining
- ★ No sweat inner mesh lining
- ★ 3 outer pockets, 2 on the sides and one on the breast
- ★ 2 inner pockets on the removable thermal lining
- ★ Wrist and hip hem adjustments
- ★ Neoprene comfort collar
- ★ EN1621-1 CE Certified YF® protections on shoulders and elbows
- ★ Pocket for back protector
- ★ Zipper to join trousers

COLOURS**AVAILABLE SIZES**

BLACK

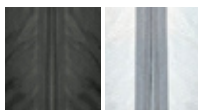
S | M | L | XL | XXL | XXXL



CODE | TBA

GARIBALDI | TORNADO PRO TEXTILE JACKET**FEATURES**

- ★ Summer jacket for sport-city use, utilising Airguard® 600D and technical Air-mesh fabrics
- ★ CE EN1621-1 Certified Powertector® protectors to shoulders and elbows, and a foam back protector
- ★ No sweat inner holed lining
- ★ Two frontal outer pockets and two inner pockets, inner pocket for Ipod-Mp3
- ★ Adjustment on neck, waist, sleeves and wrists
- ★ Dark reflective inserts on shoulders and back

COLOURS**AVAILABLE SIZES**

BLACK

GREY

XXXS | XXS | XS | S | M | L | XL | XXL | XXXL

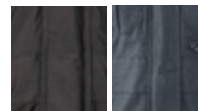


CODE | 8435403926510 | 527 | 534 | 541 | 558

8435403930142 | 159 | 166 | 173 | 180 | 197 | 203 | 210 | 227

GARIBALDI | LADIES FOX-T JACKET**FEATURES**

- ★ An urban designer jacket with a classic style and advanced safety features
- ★ H.T.N-Cord 330D fabric
- ★ CE Certified EN1621-1 Powertector® protectors to shoulders and elbows, foam back protector
- ★ Reissa® breathable, windproof and waterproof membrane

COLOURS**AVAILABLE SIZES**

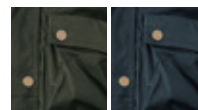
BLACK

GREY

BLACK	XS	S	M	L	XL					
GREY	XXXS	XXS	XS	S	M	L	XL	XXL	XXXL	

CODE | OLIVE 8435403938506 | 8513 | 8520 | 8537 | 8544
NAVY 8435403938551 | 8568 | 8575 | 8582 | 8599**GARIBALDI | HERITAGE 1972 OLIVE WAX COTTON LADIES JACKET****FEATURES**

- ★ A classic revival of the Original Garibaldi waterproof jacket, with detachable protectors and lining, a modern take on this classic style
- ★ CE certified to EN17092 for protective motorcycle garments
- ★ Wax style coated cotton
- ★ Reissa® breathable, windproof and waterproof membrane
- ★ CE EN1621-1 Powertector® protectors to shoulders and elbows, foam back protector

COLOURS**AVAILABLE SIZES**

OLIVE

NAVY

XS	S	M	L	XL
8	10	12	14	16 (UK Sizes)



CODE | 8435403924974 | 4981 | 4998 | 5001 | 5018
8435403933174 | 3181 | 3198 | 3204 | 3211

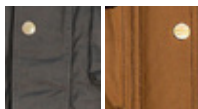
GARIBALDI | HERITAGE 1972 BLACK WAX COTTON LADIES JACKET

FEATURES

- ★ A classic revival of the Original Garibaldi waterproof jacket, with detachable protectors and lining, a modern take on this classic style
- ★ Wax style coated cotton
- ★ Reissa® breathable, windproof and waterproof membrane
- ★ CE EN1621-1 Powertector® protectors to shoulders and elbows, foam back protector

COLOURS

AVAILABLE SIZES



BLACK

BROWN

XS	S	M	L	XL
8	10	12	14	16

(UK Sizes)



CODE | 84355403940103 | 0110 | 0127 | 0134 | 0141

GARIBALDI | BULLRIDER HERITAGE LADIES JACKET

FEATURES

- ★ Leather jacket made of extra supple cowskin leather with a definitely retro look
- ★ Buffalo oily timber 0,9-1 mm vintage, tough yet super soft leather
- ★ Equipped with detachable CE homologated YF armours on both shoulders and elbows
- ★ Sleeveless detachable thermal inner lining for better comfort over all the seasons

COLOURS

AVAILABLE SIZES



OXBLOOD

XS	S	M	L	XL
8	10	12	14	16

(UK Sizes)



CODE | GREY 8435403928781 | 8798 | 8804 | 9054 | 9061 | 9023 | 9016 | 9030 | 9047
BLACK 8435403928989 | 8996 | 9009 | 8859 | 8866 | 8828 | 8811 | 8835 | 8842

GARIBALDI | LADIES TORNADO PRO TEXTILE JACKET

FEATURES

- ★ Summer jacket for sport-city use, utilising Airguard® 600D and technical Air-mesh fabrics
- ★ CE EN1621-1 Certified Powertector® protectors to shoulders and elbows, and a foam back protector
- ★ No sweat inner holed lining
- ★ Two frontal outer pockets and two inner pockets, inner pocket for Ipod-Mp3
- ★ Adjustment on neck, waist, sleeves and wrists
- ★ Dark reflective inserts on shoulders and back

COLOURS

AVAILABLE SIZES



GREY

XXXS	XXS	XS	S	M	L	XL	XXI	XXXL
------	-----	----	---	---	---	----	-----	------



CODE | 8435403936717 | 724 | 731 | 748 | 755

GARIBALDI | LADIES MOKA RACER JACKET | BLACK

FEATURES

- ★ High quality vintage style leather jacket with a refreshing, modern touch. Leather drum dyed for a homogeneous tone
- ★ Detachable thermal lining
- ★ No sweat inner mesh lining
- ★ 3 outer pockets, 2 on the sides and one on the breast
- ★ 2 inner pockets on the removable thermal lining
- ★ Wrist and hip hem adjustments.
- ★ Neoprene comfort collar
- ★ EN1621-1 CE Certified YF® protections on shoulders and elbows
- ★ Pocket for back protector.
- ★ Zipper to join trousers

COLOURS

AVAILABLE SIZES



BLACK

XS	S	M	L	XL
8	10	12	14	16

(UK Sizes)



CODE | BROWN 8435403923052 | 069 | 076 | 083 | 090 | 106
BLACK 8435403922294 | 3007 | 3014 | 3021 | 3038 | 3045

GARIBALDI | CAMPUS GLOVES | MEN

FEATURES

- ★ Garibaldi mens classic winter gloves with a vintage look
- ★ Made of genuine Goat Nappa leather for an utter suppleness
- ★ 40g Thinsulate® thermal lining.
- ★ Hipora® breathable, windproof and waterproof membrane
- ★ Double leather reinforcement on palm. Easy stretch wrist adjustment

COLOURS



BROWN

BLACK

AVAILABLE SIZES

XS | S | M | L | XL | XXL



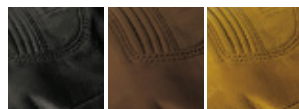
CODE | BLACK 8435403900169 | 145 | 138 | 121 | 152 | 176
BROWN 8435403900220 | 206 | 190 | 183 | 213 | 237
TAN 8435403900282 | 268 | 251 | 244 | 275 | 299

GARIBALDI | CIVIC GLOVES | MEN

FEATURES

- ★ Garibaldi Mens lightweight short glove in genuine goat leather. Elasticity, lightness and comfort for urban use
- ★ Double leather reinforcement on palm. Accordion on knuckles
- ★ Easy stretch adjustment on wrist with snap button

COLOURS



BLACK

BROWN

TAN

AVAILABLE SIZES

XS | S | M | L | XL | XXL



CODE | 8435403927623 | 7630 | 7647 | 7654 | 7661

GARIBALDI | CUSTOM BIKER FINGERLESS GLOVES | UNISEX

FEATURES

- ★ American style in supple Goat DD leather
- ★ Loops for an easy extraction
- ★ Velcro adjustment at cuff

COLOURS



BLACK

AVAILABLE SIZES

S | M | L | XL | XXL



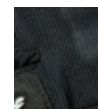
CODE | 8435403932283 | 290 | 306 | 313 | 320 | 337

GARIBALDI | INDAR WINTER CAPACITIVE GLOVES

FEATURES

- ★ A warm, wind and waterproof breathable classic retro styled glove made of Spandex with capacitive fingers
- ★ Spandex gloves with Clarino Nash palm. Integrated knuckle protector, velcro adjustment and Neoprene wrist insert
- ★ Soft EVA protector on palm. Capacitive pads on index finger and thumb. Hipora waterproof and breathable membrane. 40g Thinsulate® insulation. McFit technology inside. 3M® reflective piping on back

COLOURS



BLACK

AVAILABLE SIZES

XS | S | M | L | XXL | XXXL



CODE | 8435403936779 | 786 | 793 | 809 | 816 | 823
8435403938841 | 58 | 65 | 72 | 89 | 96

GARIBALDI | SMOKE VINTAGE GLOVES

FEATURES

- ★ High quality vintage style gloves with a refreshing, modern touch. Made with supple Goat DD on back and genuine Goat Nappa leather on palm for an utter suppleness
- ★ BMB McFit wrinkle-free and seamless inner lining for maximum comfort and grip
- ★ Thermoplastic knuckle protector and soft EVA padding on fingers
- ★ All protectors are covered by perforated leather

COLOURS



BLACK

TOBACCO

AVAILABLE SIZES

XS | S | M | L | XL | XXL



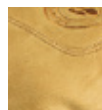
CODE | 8435403923328 | 335 | 342 | 359 | 366 | 373

GARIBALDI | URBE GLOVES TOBACCO | MEN

FEATURES

- ★ Garibaldi mens winter gloves for the urban traveller or commuter made of extremely smooth Nubuck leather for an utter suppleness and excellent touch
- ★ 40g Thinsulate® thermal lining
- ★ Double leather reinforcement with Kevlar® Armotex® aramid fibers on palm. Wrist strap to stop gloves slipping off

COLOURS



TOBACCO

AVAILABLE SIZES

XS | S | M | L | XL | XXL



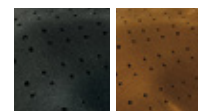
CODE | 8435403901012 | 0992 | 0985 | 0978 | 1005 | 1029

GARIBALDI | VENETO GLOVES | UNISEX

FEATURES

- ★ Summer gloves in genuine holed supple Nubuck with maximum smoothness and great sense of movement
- ★ Double leather reinforcement on palm
- ★ Easy stretch adjustment on wrist

COLOURS



BLACK

TOBACCO

AVAILABLE SIZES

XS | S | M | L | XL | XXL



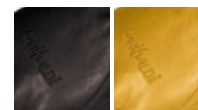
CODE | BLACK 8435403923113 | 120 | 137 | 144 | 151
TAN 8435403923212 | 229 | 236 | 243 | 250

GARIBALDI | CAMPUS GLOVES | LADIES

FEATURES

- ★ Garibaldi mens classic winter gloves with a vintage look
- ★ Made of genuine Goat Nappa leather for an utter suppleness
- ★ 40g Thinsulate® thermal lining
- ★ Hipora® breathable, windproof and waterproof membrane
- ★ Double leather reinforcement on palm. Easy stretch wrist adjustment

COLOURS



BLACK

TAN

AVAILABLE SIZES

XS | S | M | L | XL



CODE | 8435403901074 | 050 | 043 | 036 | 067

GARIBALDI | VEGA GLOVES BLACK | LADIES

FEATURES

★ Garibaldi ladies urban gloves made of genuine goat leather. Double leather reinforcement on palm. Elastic adjustment on wrist

COLOURS



BLACK

AVAILABLE SIZES

XS	S	M	L	XL
----	---	---	---	----



ASHLEY WATSON

PRODUCTS AVAILABLE IN UK AND EUROPE

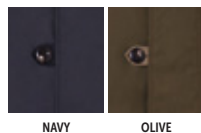
CODE | AW_M_JKT_ES_NAVY_S | M | L | XL | XXL
 AW_M_JKT_ES_OLIVE_S | M | L | XL | XXL

ASHLEY WATSON | EVERSOLT JACKET

FEATURES

- ★ Made in England, from a waterproof dry waxed and laminated canvas, this new take on a motorcycle jacket is fully lined with an abrasive resistant fabric and features removable CE approved Level 2 armour
- ★ The styling takes notes from clothing worn by the pioneering riders of the early 21st Century
- ★ Triple-Stitched Seams
- ★ Armour – D30® CE Level 2 approved armour at the elbow and shoulder with optional back protector
- ★ Fully lined with Dyneema, an abrasive resistant fabric, fifteen times stronger than steel and 40% stronger than Kevlar®
- ★ Weatherproof – The canvas outer layer has a resistant dry wax coating that has the look and feel of heritage motorcycle jackets without the oily handle of traditionally waxed cotton. A waterproof film is laminated to the reverse of this fabric. Combined with taped and sealed seams, it makes the Eversholt jacket waterproof
- ★ Storm Baffle – The jacket features a three-button neck baffle that secures the two sides of the collar to the placket, stopping wind entering at the neck
- ★ The collar is faced in a corduroy making it warm and comfortable when up-turned.
- ★ Double Zip Guard – A double storm guard cocoons the zip opening, stopping wind entering the front of the jacket
- ★ If internal zip is left open and the buttons remain fastened, air can flow into the jacket
- ★ Expandable Pockets – The two main pockets can be expanded, snappers secure the billow
- ★ The pockets are lined with a corduroy fabric. Storm guards on the flaps keep out the weather
- ★ Easy to open – Large horn buttons fasten to 14 ounce cotton twill tabs, making the jacket easy to open whilst wearing gloves
- ★ Document Pocket – Two internal weatherproof chest pockets for documents

COLOURS

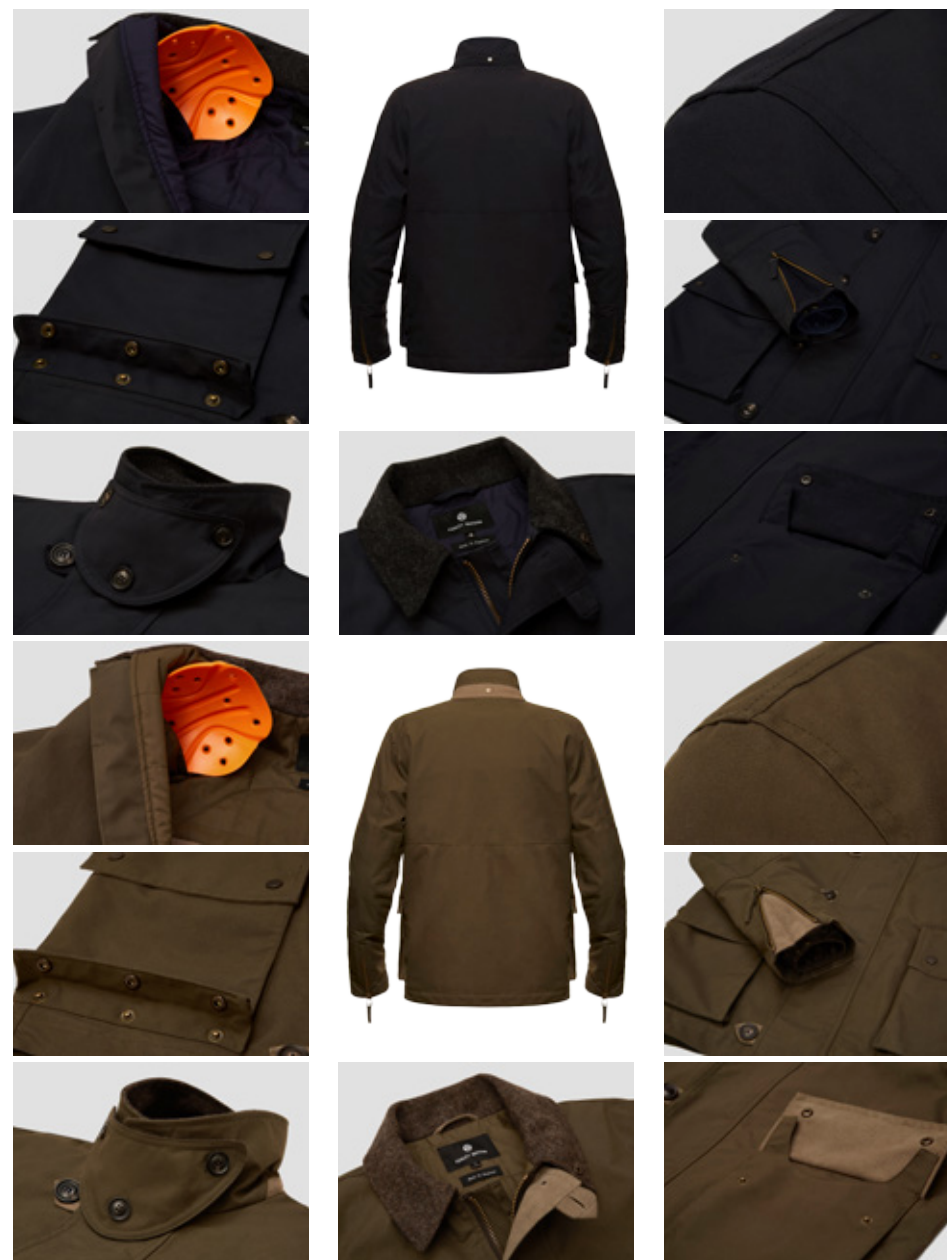


NAVY

OLIVE

AVAILABLE SIZES

S | M | L | XL | XXL





MotoBailey
SHOE COMPANY

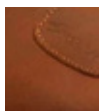
PRODUCTS AVAILABLE IN UK AND EUROPE



CODE | 111373

MOTOBAILLEY | LA RYDER SHOES**FEATURES**

- ★ Kevlar lining throughout entire shoe
- ★ Modern Style design with HIGH Comfort insoles
- ★ Built to sit just above the ankle yet look lower to the eye
- ★ Handbuilt with imported French leather
- ★ Built-in PU ankle protection
- ★ Our boots run 1/2 size smaller than your Nike running shoe. So order .5 size larger than you normally wear

COLOURS**AVAILABLE SIZES**

TAN

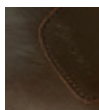
8	8.5	9	9.5	10	(UK sizes)
40-41	41	41-42	42	42-43	(Euro sizes)



CODE | 111373

MOTOBAILLEY | EL BULLI SHOES**FEATURES**

- ★ Kevlar lining throughout entire shoe
- ★ Built to cover higher on the ankle with a more fitted feel
- ★ Handbuilt with imported French leather
- ★ Built-in PU ankle protection
- ★ 1" heel for the classic boot style with modern design elements
- ★ Our boots run 1/2 size smaller than your Nike running shoe. So order .5 size larger than you normally wear

COLOURS**AVAILABLE SIZES**

BROWN

8	8.5	9	9.5	10	(UK sizes)
40-41	41	41-42	42	42-43	(Euro sizes)



PRODUCTS AVAILABLE IN EUROPE ONLY



CODE | BLACK 0801-0210-0052 | 0053 | 0054 | 0055 | 0056 | 0057
 OXBLOOD 0801-0210-3252 | 3253 | 3254 | 3255 | 3256 | 3257
 TOBACCO 0801-0210-0152 | 0153 | 0154 | 0155 | 0156 | 0157

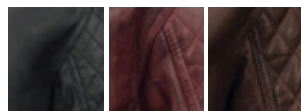
ROLAND SANDS DESIGN | CLASH LEATHER JACKET

FEATURES

- ★ Hand finished, washed and oiled/waxed top grain cowhide (0.9-1.1mm thick)
- ★ Detailed rocker style, with shorty snap collar, offset zipper and front zip pockets
- ★ Quilted accents on shoulders and lower back/Riveted elbows
- ★ Aggressive sport style fit, with rotated, pre-curved sleeves, dropped back length and relaxed collar opening
- ★ Satin poly lining with custom RSD repeat "numbers" heat emboss
- ★ Armor ready shoulder, elbow and protector pockets

AVAILABLE SIZES

COLOURS



BLACK OXBLOOD TOBACCO

S | M | L | XL | XXL | XXXL



CODE | 0801-0210-5652 | 5653 | 5654 | 5655 | 5656 | 5657

ROLAND SANDS DESIGN | CLASH BLACK OPS JACKET

FEATURES

- ★ Combat hand finished, washed and oiled / waxed top grain cowhide leather (0.9mm-1.1mm thickness)
- ★ Detailed rocker style with shorty snap collar and offset zipper
- ★ Quilted accents, shoulders and lower back
- ★ Aggressive riding fit with rotated, pre-curved sleeves, dropped back length, and relaxed collar opening
- ★ Reinforced riveted elbows
- ★ Rubberized black trims
- ★ Suede leather exterior and interior trims
- ★ YKK® water-repellant zippers
- ★ Satin poly lining with custom RSD lightning bolt heat emboss
- ★ Soft lined electronics security pockets

AVAILABLE SIZES

COLOURS



BLACK

S | M | L | XL | XXL | XXXL



CODE | BLACK 0801-0258-0052 | 0053 | 0054 | 0055 | 0056 | 0057
 OXBLOOD 0801-0258-3252 | 3253 | 3254 | 3255 | 3256 | 3257

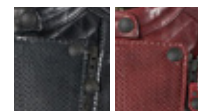
ROLAND SANDS DESIGN | CLASH PERF LEATHER JACKET

FEATURES

- ★ Hand finished, washed and oiled/waxed top grain cowhide (0.9-1.1mm thick)
- ★ Detailed rocker style, with shorty snap collar, offset zipper and front zip pockets
- ★ Quilted accents on shoulders and lower back/Riveted elbows
- ★ Aggressive sport style fit, with rotated, pre-curved sleeves, dropped back length and relaxed collar opening
- ★ Satin poly lining with custom RSD repeat "numbers" heat emboss
- ★ Armor ready shoulder, elbow and protector pockets

AVAILABLE SIZES

COLOURS



BLACK OXBLOOD

S | M | L | XL | XXL | XXXL



CODE | BLACK 0801-0243-0052 | 0053 | 0054 | 0055 | 0056 | 0057
 BROWN 0801-0210-1252 | 1253 | 1254 | 1255 | 1256 | 1257

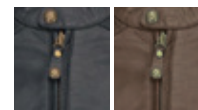
ROLAND SANDS DESIGN | CARSON LEATHER JACKET

FEATURES

- ★ Genuine, top grain RSD 'Matte Buffalo' leather (1.0-1.2mm thickness)
- ★ Classic riding fit with rotated, pre-curved sleeves, dropped back length, and relaxed collar opening
- ★ Padded details throughout jacket
- ★ Zip pockets and cuffs
- ★ Side adjustable waist tabs
- ★ Satin poly lining with custom RSD numbers heat emboss
- ★ Soft lined electronics security pocket
- ★ Stretch mesh cargo stuff pockets
- ★ Armor ready shoulder, elbow and back protector pockets

AVAILABLE SIZES

COLOURS



BLACK BROWN

S | M | L | XL | XXL | XXXL



CODE | BLACK 0801-0200-0052 | 0053 | 0054 | 0055 | 0056 | 0057
TOBACCO 0801-0200-0152 | 0153 | 0154 | 0155 | 0156 | 0157

ROLAND SANDS DESIGN | RONIN LEATHER JACKET

FEATURES

- ★ Detailed café style, with shorty snap collar and front zip pockets
- ★ RSD "Airborne" hand finished, washed and oiled/waxed top grain cowhide (0.9mm-1.1mm thickness)
- ★ Perforated leather interior trims
- ★ Perforated sleeve venting
- ★ Aggressive sport style riding fit, with rotated, pre-curved sleeves, dropped back length and relaxed collar opening
- ★ Sleeve zip pocket, side zipper waist adjust and zip close cuffs
- ★ Satin poly lining with custom RSD repeat "numbers" heat emboss
- ★ Armor ready shoulder, elbow and back protector pockets

COLOURS

AVAILABLE SIZES



BLACK

TOBACCO

S | M | L | XL | XXL | XXXL



CODE | OXBLOOD/BLACK 0801-0200-3552 | 3553 | 3554 | 3555 | 3556 | 3557
BLACK/OXBLOOD 0801-0259-3652 | 3653 | 3654 | 3655 | 3656 | 3657
BLACK/STEEL 0801-0259-3752 | 3753 | 3754 | 3755 | 3756 | 3757

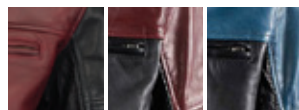
ROLAND SANDS DESIGN | RONIN LEATHER JACKET

FEATURES

- ★ Detailed café style, with shorty snap collar and front zip pockets
- ★ RSD "Airborne" hand finished, washed and oiled/waxed top grain cowhide (0.9mm-1.1mm thickness)
- ★ Perforated leather interior trims
- ★ Perforated sleeve venting
- ★ Aggressive sport style riding fit, with rotated, pre-curved sleeves, dropped back length and relaxed collar opening
- ★ Sleeve zip pocket, side zipper waist adjust and zip close cuffs
- ★ Satin poly lining with custom RSD repeat "numbers" heat emboss
- ★ Armor ready shoulder, elbow and back protector pockets

COLOURS

AVAILABLE SIZES



OXBLOOD/BLACK

BLACK/OXBLOOD

BLACK/STEEL

S | M | L | XL | XXL | XXXL



CODE | 0801-0200-5652 | 5653 | 5654 | 5655 | 5656 | 5657

ROLAND SANDS DESIGN | RONIN BLACK OPS JACKET

FEATURES

- ★ Combat hand finished, washed and oiled / waxed top grain cowhide leather (0.9mm-1.1mm thickness)
- ★ Detailed café style shorty snap collar
- ★ Aggressive riding fit with rotated, pre-curved sleeves, dropped back length, and relaxed collar opening
- ★ Rubberized black trims
- ★ Suede leather exterior and interior trims
- ★ YKK® water-repellant zippers
- ★ Satin poly lining with custom RSD lightning bolt heat emboss
- ★ Soft lined electronics security pocket
- ★ Stretch mesh cargo stuff pockets
- ★ Armor ready shoulder, elbow and back protector pockets

COLOURS

AVAILABLE SIZES



BLACK

S | M | L | XL | XXL | XXXL



CODE | BLACK 0801-0240-0052 | 0053 | 0054 | 0055 | 0056 | 0057
TOBACCO 0801-0240-0152 | 0153 | 0154 | 0155 | 0156 | 0157
BLUE BLACK 0801-0257-1552 | 1553 | 1554 | 1555 | 1556 | 1557

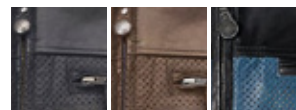
ROLAND SANDS DESIGN | RONIN PERF LEATHER JACKET

FEATURES

- ★ Detailed café style, with shorty snap collar and front zip pockets
- ★ RSD "Airborne" hand finished, washed and oiled/waxed top grain cowhide (0.9mm-1.1mm thickness)
- ★ Perforated goat leather venting panels
- ★ Aggressive riding fit, with rotated, pre-curved sleeves, dropped back length and relaxed collar opening
- ★ Sleeve zip pocket, side zipper waist adjust
- ★ Armor ready shoulder, elbow and back protector pockets
- ★ Stretch mesh cargostuff pockets
- ★ Ronin has an aggressive sport style fit but wears true to size

COLOURS

AVAILABLE SIZES



BLACK

TOBACCO

BLUE BLACK

S | M | L | XL | XXL | XXXL



COLOURS



BLACK

CODE | 0801-0227-0052 | 0053 | 0054 | 0055 | 0056 | 0057

ROLAND SANDS DESIGN | RONIN RESERVE LEATHER JACKET**FEATURES**

- ★ Combat hand finished, washed and oiled / waxed top grain cowhide leather (0.9mm-1.1mm thickness)
- ★ Detailed café style shorty snap collar
- ★ Aggressive riding fit with rotated, pre-curved sleeves, dropped back length, and relaxed collar opening
- ★ Rubberized black trims
- ★ Suede leather exterior and interior trims
- ★ YKK® water-repellant zippers
- ★ Satin poly lining with custom RSD lightning bolt heat emboss
- ★ Soft lined electronics security pocket
- ★ Armor ready shoulder, elbow and back protector pockets

AVAILABLE SIZES

S | M | L | XL | XXL | XXXL



COLOURS



BLACK

CODE | 0801-0247-0052 | 0053 | 0054 | 0055 | 0056 | 0057

ROLAND SANDS DESIGN | SONOMA LEATHER JACKET**FEATURES**

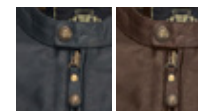
- ★ Genuine, top grain RSD 'Matte Buffalo' leather (1.0-1.2mm thickness)
- ★ Aggressive riding fit with rotated, pre-curved sleeves, dropped back length, and relaxed collar opening
- ★ Perforated venting panels
- ★ Stretch nylon panel sleeve inserts
- ★ Zip pockets and cuffs
- ★ Mesh lining
- ★ CE approved shoulder and elbow armor included
- ★ Back protector
- ★ Shoulder, elbow and back protector armor pockets

AVAILABLE SIZES

S | M | L | XL | XXL | XXXL



COLOURS



BLACK

BROWN

CODE | BLACK | 0801-0242-0052 | 0053 | 0054 | 0055 | 0056 | 0057

BROWN | 0801-0242-1252 | 1253 | 1254 | 1255 | 1256 | 1257

ROLAND SANDS DESIGN | WALKER LEATHER JACKET**FEATURES**

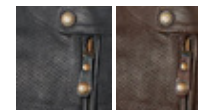
- ★ Genuine, top grain RSD 'Matte Buffalo' leather (1.0-1.2mm thickness)
- ★ Classic riding fit with rotated, pre-curved sleeves, dropped back length, and relaxed collar opening
- ★ Zip pockets and cuffs
- ★ Side adjustable waist tabs
- ★ Satin poly lining with custom RSD numbers heat emboss
- ★ Soft lined electronics security pocket
- ★ Stretch mesh cargo stuff pockets
- ★ Armor ready shoulder, elbow and back protector pockets

AVAILABLE SIZES

S | M | L | XL | XXL | XXXL



COLOURS



BLACK

BROWN

CODE | BLACK | 0801-0261-0052 | 0053 | 0054 | 0055 | 0056 | 0057

BROWN | 0801-0261-1252 | 1253 | 1254 | 1255 | 1256 | 1257

ROLAND SANDS DESIGN | WALKER PERF LEATHER JACKET**FEATURES**

- ★ Genuine, top grain RSD 'Matte Buffalo' leather (1.0-1.2mm thickness)
- ★ Classic riding fit with rotated, pre-curved sleeves, dropped back length, and relaxed collar opening
- ★ Zip pockets and cuffs
- ★ Side adjustable waist tabs
- ★ Satin poly lining with custom RSD numbers heat emboss
- ★ Soft lined electronics security pocket
- ★ Stretch mesh cargo stuff pockets
- ★ Armor ready shoulder, elbow and back protector pockets

AVAILABLE SIZES

S | M | L | XL | XXL | XXXL



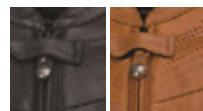
CODE | BLACK 0801-0239-0052 | 0053 | 0054 | 0055 | 0056 | 0057
BROWN 0801-0239-5452 | 5453 | 5454 | 5455 | 5456 | 5457

ROLAND SANDS DESIGN | ZUMA LEATHER JACKET

FEATURES

- ★ Genuine, top grain buffalo leather (1.0-1.2mm thickness)
- ★ Aggressive riding fit with rotated, pre-curved sleeves, dropped back and relaxed collar opening
- ★ Stretch nylon panel sleeve
- ★ Zip pockets and cuffs
- ★ Side adjustable waist tabs
- ★ RSD race hump
- ★ SAS-TEC CE certified Level 2 shoulder and elbow armor included
- ★ Foam back protector included

AVAILABLE SIZES



BLACK

TIMBER BROWN

S | M | L | XL | XXL | XXXL



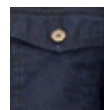
CODE | 0801-0244-3752 | 3753 | 3754 | 3755 | 3756 | 3757

ROLAND SANDS DESIGN | BRONSON DENIM JACKET

FEATURES

- ★ 10.5oz indigo denim with silicone wash
- ★ Classic riding fit with rotated, pre-curved sleeves, dropped back length, and relaxed collar opening
- ★ Genuine leather collar detail
- ★ Zip front and pockets
- ★ Action back gussets for ease of motion
- ★ Armor ready shoulder, elbow and back protector pockets

AVAILABLE SIZES



INDIGO

S | M | L | XL | XXL | XXXL



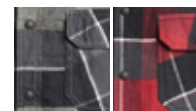
CODE | BLACK/GREY 0806-0411-0052 | 0053 | 0054 | 0055 | 0056 | 0057
RED 0806-0411-9052 | 9053 | 9054 | 9055 | 9056 | 9057

ROLAND SANDS DESIGN | GORMAN FLANNEL

FEATURES

- ★ RSD 100% Cotton Flannel (slightly brushed)
- ★ Quilted body lining with Aramid
- ★ Plain satin poly sleeve lining with Aramid
- ★ Center Front Zippered closure with snaps
- ★ Inside chest pocket
- ★ Snap down collar
- ★ Snap down front pockets
- ★ Armor ready shoulder, elbow and back protector pockets
- ★ Classic Fitted Riders Style

AVAILABLE SIZES



BLACK/GREY

RED

S | M | L | XL | XXL | XXXL



CODE | BLACK 0801-0266-0052 | 0053 | 0054 | 0055 | 0056 | 0057
KHAKI 0801-0266-3752 | 3753 | 3754 | 3755 | 3756 | 3757

ROLAND SANDS DESIGN | HEFE JACKET

FEATURES

- ★ Heavy weight Kevlar / waxed denim
- ★ Matte Buffalo leather (1.0-1.1mm thickness) sleeves
- ★ Quilted satin poly mesh body lining and soft lined electronics security pocket
- ★ Rotated precurved sleeves
- ★ Center front rubberized shank snaps
- ★ Front welt zip pockets
- ★ Adjustable waist tabs and zip close sleeve cuffs
- ★ Back flex gussets
- ★ Ships with CE approved level 1 elbows & shoulder armor included
- ★ Armor ready back protector pocket
- ★ Classic fit with pre-curved sleeves, rotated shoulders

AVAILABLE SIZES



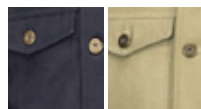
INDIGO

BLACK

S | M | L | XL | XXL | XXXL



COLOURS



NAVY

KHAKI

CODE | NAVY 0801-0245-0052 | 0053 | 0054 | 0055 | 0056 | 0057
KHAKI 0801-0245-4052 | 4053 | 4054 | 4055 | 4056 | 4057

ROLAND SANDS DESIGN | RAMONE DUCK COTTON JACKET

FEATURES

- ★ 18oz heavy weight cotton duck
- ★ Classic riding fit with rotated, pre-curved sleeves, dropped back length and relaxed collar opening
- ★ Corduroy collar detail
- ★ Zip front and pockets
- ★ Action back gussets for ease of motion
- ★ Side adjustable waist tabs
- ★ Satin poly lining with custom RSD numbers heat emboss
- ★ Soft lined electronics security pocket
- ★ Stretch mesh cargo stuff pockets
- ★ Armor ready shoulder, elbow and back protector pockets

AVAILABLE SIZES

S | M | L | XL | XXL | XXXL



COLOURS



BLACK

RANGER TOBACCO

CODE | BLACK 0801-0241-0052 | 0053 | 0054 | 0055 | 0056 | 0057
TOBACCO 0801-0241-0652 | 0653 | 0654 | 0655 | 0656 | 0657

ROLAND SANDS DESIGN | RONIN WAXED COTTON JACKET

FEATURES

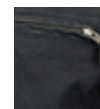
- ★ Water repellant / breathable RSD Waxed Cotton (11.5oz finished weight)
- ★ Cafe style with snap collar
- ★ Aggressive riding fit, rotated, pre-curved sleeves, dropped back length, and relaxed collar opening
- ★ Genuine leather contrast detail
- ★ Zip front, pockets and cuffs
- ★ Zippered sleeve vents
- ★ Side adjustable waist tabs with metal buckle
- ★ Satin poly lining with custom RSD numbers heat emboss
- ★ Stretch mesh cargo stuff pockets
- ★ Armor ready shoulder, elbow and back protector pockets

AVAILABLE SIZES

S | M | L | XL | XXL | XXXL



COLOURS



BLACK

CODE | 0801-1220-0052 | 0053 | 0054 | 0055 | 0056 | 0057

ROLAND SANDS DESIGN | RONIN RESERVE WAXED COTTON JACKET

FEATURES

- ★ Water repellant / breathable RSD Waxed Cotton (11.5oz finished weight)
- ★ Cafe style with snap collar
- ★ Aggressive riding fit with rotated, pre-curved sleeves, dropped back length, and relaxed collar opening
- ★ Genuine leather contrast detail
- ★ Zip front, pockets and cuffs
- ★ Side adjustable waist tabs with metal buckle
- ★ Satin poly lining with custom RSD numbers heat emboss
- ★ Stretch mesh cargo stuff pockets

AVAILABLE SIZES

S | M | L | XL | XXL | XXXL



COLOURS



BLACK

BROWN

CODE | BLACK 0801-0232-0052 | 0053 | 0054 | 0055 | 0056 | 0057
BROWN 0801-0232-1252 | 1253 | 1254 | 1255 | 1256 | 1257

ROLAND SANDS DESIGN | EDWARDS WAXED COTTON JACKET

FEATURES

- ★ British Millerrain 10.5oz Waxed Cotton reinforced with water-proof barrier and taped seams
- ★ Removeable quilted thermal vest
- ★ 2-way zippered front with velcro flap closure
- ★ Waterproof chest cargo pocket with YKK water-resistant zippers
- ★ Back vent with YKK water-resistant zippers
- ★ Ample storage pockets inside of outershell and removable quilted thermal vest
- ★ Armor ready shoulder, elbow and back protector pockets

AVAILABLE SIZES

S | M | L | XL | XXL | XXXL



CODE | BLACK 0801-0233-0052 | 0053 | 0054 | 0055 | 0056 | 0057
BROWN 0801-0233-1252 | 1253 | 1254 | 1255 | 1256 | 1257

ROLAND SANDS DESIGN | HOUSTON WAXED COTTON JACKET

FEATURES

- ★ British Millerrain 10.5oz Waxed Cotton reinforced with water-proof barrier and taped seams
- ★ Removeable quilted thermal vest
- ★ 2-way zippered front with velcro flap closure
- ★ Waterproof chest cargo pocket with YKK water-resistant zippers
- ★ Back vent with YKK water-resistant zippers
- ★ Ample storage pockets inside of outershell and removable quilted thermal vest
- ★ Armor ready shoulder, elbow and back protector pockets

COLOURS

AVAILABLE SIZES



BLACK

BROWN

S | M | L | XL | XXL | XXXL



CODE | BLACK 0801-0231-0052 | 0053 | 0054 | 0055 | 0056 | 0057
OLIVE 0801-0231-1352 | 1353 | 1354 | 1355 | 1356 | 1357
BLUE 0801-0231-1552 | 1553 | 1554 | 1555 | 1556 | 1557

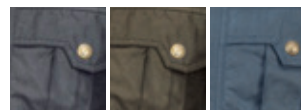
ROLAND SANDS DESIGN | KENT WAXED COTTON JACKET

FEATURES

- ★ British Millerrain 10.5oz waxed cotton
- ★ Classic riding fit with rotated, pre-curved sleeves, dropped back length and relaxed collar opening
- ★ Sleeve zip pocket, zip close cuffs
- ★ Satin poly lining with custom RSD repeat "numbers" heat emboss
- ★ Soft lined electronics secure pockets
- ★ Stretch mesh cargo stuff pockets
- ★ Armor ready shoulder, elbow and back protector pockets

COLOURS

AVAILABLE SIZES



BLACK

OLIVE

BLUE

S | M | L | XL | XXL | XXXL



CODE | BLACK 0801-0265-0052 | 0053 | 0054 | 0055 | 0056 | 0057
FATIGUE GREEN 0801-0265-4652 | 4653 | 4654 | 4655 | 4656 | 4657

ROLAND SANDS DESIGN | SQUAD JACKET

FEATURES

- ★ Waxed cotton spandex blend
- ★ 100% Kevlar® mid layer
- ★ Quilted satin lining (body only)
- ★ Utility zip pocket on sleeve
- ★ CF zip with storm flap
- ★ Front zip welt pockets
- ★ Inside zip storage pocket
- ★ Ships with CE approved level 1 elbows & shoulder armor included
- ★ Armor ready back protector pocket
- ★ Classic fit

COLOURS

AVAILABLE SIZES



BLACK

FATIGUE GREEN

S | M | L | XL | XXL | XXXL



CODE | 0806-0406-1252 | 1253 | 1254 | 1255 | 1256

ROLAND SANDS DESIGN | STODDARD SHIRT

FEATURES

- ★ RSD plaid cotton flannel
- ★ YKK® zip front
- ★ Fully lined with Kevlar®
- ★ Zip sleeve pocket
- ★ Snap down collar
- ★ Snap close pockets
- ★ Adjustable snap cuffs
- ★ Back protector armor pocket
- ★ The Stoddard has classic riders fit and wears true to size, if running armor we suggest going up 1 size

COLOURS

AVAILABLE SIZES



BROWN

S | M | L | XL | XXL



CODE | 0801-0276-0052 | 0053 | 0054 | 0055 | 0056 | 0057

ROLAND SANDS DESIGN | TRENT JACKET**FEATURES**

- ★ Outershell – 320 gsm – 67% Kevlar® / 33% Cordura
- ★ Fully lined satin poly with mesh inserts
- ★ Zip close front
- ★ Zip close cuffs with snaps
- ★ Café snap collar
- ★ Zip close vents
- ★ Inside zip storage pocket
- ★ Ships with CE approved level 1 elbows & shoulder armor included
- ★ Armor ready back protector pocket
- ★ Classic fit with pre-curved sleeves, rotated shoulders

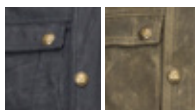
COLOURS**AVAILABLE SIZES**

BLACK

S | M | L | XL | XXL | XXXL

CODE | 0801-0246-0052 | 0053 | 0054 | 0055 | 0056 | 0057
0801-0246-0652 | 0653 | 0654 | 0655 | 0656 | 0657**ROLAND SANDS DESIGN | TRUMAN WAXED COTTON JACKET****FEATURES**

- ★ RSD Waxed Cotton, water repellant / breathable 11.5oz finished weight
- ★ RSD 'Dakota' cowhide leather (0.9mm -1.1mm)
- ★ Classic riding fit with rotated, pre-curved sleeves, dropped back length, and relaxed collar opening
- ★ Genuine leather contrast detail
- ★ Zip front, pockets and cuffs
- ★ Zippered sleeve vents
- ★ Side adjustable waist tabs with metal buckle
- ★ Satin poly lining with custom RSD numbers heat emboss
- ★ Soft lined electronics security pocket
- ★ Stretch mesh cargo stuff pockets
- ★ Armor ready shoulder, elbow and back protector pockets

AVAILABLE SIZES**COLOURS**

BLACK

RANGER MAHOGANY

S | M | L | XL | XXI | XXXL



CODE | 0806-0410-0052 | 0053 | 0054 | 0055 | 0056 | 0057

ROLAND SANDS DESIGN | VINCENT HOODIE**FEATURES**

- ★ Coolmax/Aramid Knit Shell
- ★ Cordura®/NYCO body and sleeve lining
- ★ Zip close front
- ★ Rib knit cuffs and hem
- ★ Kangaroo pocket lined with Cordura® NYCO
- ★ Armor ready shoulder, elbow and back protector pockets
- ★ Classic Riders Fit

COLOURS**AVAILABLE SIZES**

BLACK

S | M | L | XL | XXL | XXXL



CODE | 0809-1219-0052 | 0053 | 0054 | 0055 | 0056 | 0057

ROLAND SANDS DESIGN | LEATHER COLT VEST**FEATURES**

- ★ Airborne hand finished, washed and oiled / waxed top grain cowhide (.9mm-1.1mm thickness)
- ★ Classic riding fit with dropped back length and relaxed collar opening
- ★ Quilted shoulder and lower back details
- ★ 2-way zippered front and power stretch

AVAILABLE SIZES**COLOURS**

BLACK

S | M | L | XL | XXL | XXXL



CODE | BLACK 0809-0229-0052 | 0053 | 0054 | 0055 | 0056 | 0057
BROWN 0809-0229-0652 | 0653 | 0654 | 0655 | 0656 | 0657

ROLAND SANDS DESIGN | RINGO TEXTILE VEST

FEATURES

- ★ Water repellant / breathable waxed cotton (11.5oz)
- ★ Classic riding fit with dropped back length and rib knit collar
- ★ Quilted all over detail
- ★ 2-way zippered front
- ★ Adjustable waist tabs
- ★ Zip close exterior and interior pockets for storage

COLOURS

AVAILABLE SIZES



BLACK

BROWN

S | M | L | XL | XXL | XXXL



CODE | BLACK 0814-0501-0052 | 0053 | 0054 | 0055 | 0056 | 0057
KHAKI 0814-0501-0252 | 0253 | 0254 | 0255 | 0256 | 0257
CHARCOAL 0814-0501-0452 | 0453 | 0454 | 0455 | 0456 | 0457

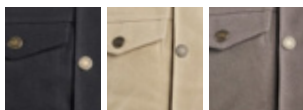
ROLAND SANDS DESIGN | RAMONE VEST

FEATURES

- ★ 18oz heavy weight duck cotton
- ★ Corduroy collar
- ★ Zip & button front closure
- ★ Fully lined with mesh inserts
- ★ Armor ready back protector pocket
- ★ Inside zip storage pocket
- ★ Action back gussets for ease of motion
- ★ Side adjustable waist tabs
- ★ Classic riders fit

COLOURS

AVAILABLE SIZES



BLACK

KHAKI

CHARCOAL

S | M | L | XL | XXL | XXXL



CODE | 0807-0500-3752 | 3753 | 3754 | 3755 | 3756 | 3757

ROLAND SANDS DESIGN | DALTON JEANS

FEATURES

- ★ 12 oz 70% Cotton, 30% Kevlar®
- ★ Slim straight fit with low rise
- ★ Button fly
- ★ Reinforced / triple stitching on inseam and back rise
- ★ Reinforced / double layer back pant cuff
- ★ Quilt stitching detail
- ★ Custom RSD trims

COLOURS

AVAILABLE SIZES

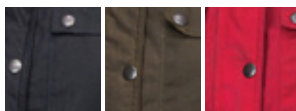


INDIGO

Waist | 28 | 30 | 32 | 34 | 36 | 38



COLOURS



BLACK RANGER BROWN RED

CODE | NAVY 0801-1254-0052 | 0053 | 0054 | 0055 | 0056
 BROWN 0801-1254-0652 | 0653 | 0654 | 0655 | 0656
 RED 0801-1254-9052 | 9053 | 9054 | 9055 | 9056

ROLAND SANDS DESIGN | LADIES GINGER WAXED COTTON JACKET

FEATURES

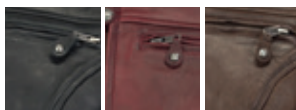
- ★ British Millerrain 10.5oz waxed cotton
- ★ Classic riding fit with rotated, pre-curved sleeves, mid length, and relaxed collar opening
- ★ Genuine leather contrast detail
- ★ Zip front and cuffs
- ★ Side adjustable waist tabs with metal buckle
- ★ Satin poly lining with custom RSD numbers heat emboss
- ★ Soft lined electronics security pocket
- ★ Stretch mesh cargo stuff pockets
- ★ Armor ready shoulder, elbow and back protector pockets

AVAILABLE SIZES

S | M | L | XL | XXL



COLOURS



BLACK OXBLOOD TOBACCO

CODE | BLACK 0801-1207-0052 | 0053 | 0054 | 0055 | 0056
 OXBLOOD 0801-1207-3252 | 3253 | 3254 | 3255 | 3256
 TOBACCO 0801-1207-0152 | 0153 | 0154 | 0155 | 0156

ROLAND SANDS DESIGN | LADIES MAVEN LEATHER JACKET

FEATURES

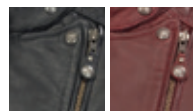
- ★ Detailed, fitted café style, with shorty snap collar
- ★ Hand finished, washed and oiled/waxed top grain cowhide (1.1 mm-1.3mm thickness)
- ★ Performance riding fit, with rotated, pre-curved sleeves, dropped back
- ★ Comfort flex panels under arms at chest
- ★ Adjustable zip waist, zip close cuffs, interior stuff pocket, zip close interior pocket, front and sleeve zip pocket
- ★ Equipped to fit optional RSD Armor in the elbows, shoulder and back

AVAILABLE SIZES

S | M | L | XL | XXL



COLOURS



BLACK OXBLOOD

CODE | BLACK 0801-1211-0052 | 0053 | 0054 | 0055 | 0056
 OXBLOOD 0801-1211-3252 | 3253 | 3254 | 3255 | 3256

ROLAND SANDS DESIGN | LADIES RIOT LEATHER JACKET

FEATURES

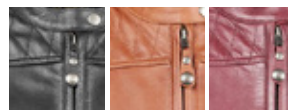
- ★ Retro style motorcycle jacket with RSD unique flair for style and quality
- ★ "Blackstone" supple top grain cowhide (0.8mm-0.9mm thickness)
- ★ Shorty snap collar, offset zipper and front zip pockets
- ★ Aggressive café racer style riding
- fit with rotated, pre-curved sleeves, dropped back length and relaxed collar opening
- ★ Quilted accents, perforated leather interior trims
- ★ Zip close side, cuffs and interior chest pocket
- ★ Armor ready shoulder, elbow and back protector pockets

AVAILABLE SIZES

S | M | L | XL | XXL



COLOURS



BLACK BROWN MERLOT

CODE | BLACK 0801-1267-0052 | 0053 | 0054 | 0055 | 0056
 BROWN 0801-1267-1252 | 1253 | 1254 | 1255 | 1256
 MERLOT 0801-1267-9052 | 9053 | 9054 | 9055 | 9056

ROLAND SANDS DESIGN | LADIES TRINITY LEATHER JACKET

FEATURES

- ★ Genuine, top grain RSD "Matte Buffalo" leather (1.0-1.1mm thickness)
- ★ Quilted detail on shoulders
- ★ Adjustable zip waist, zip close cuffs, interior stuff pocket, zip close interior pocket, front and sleeve zip pocket
- ★ Armor ready shoulder, elbow and back protector pockets
- ★ Pre-curved sleeves, rotated shoulders
- ★ Performance riding fit

AVAILABLE SIZES

S | M | L | XL | XXL



CODE | BLACK 0802-0108-0052 | 0053 | 0054 | 0055 | 0056
 TOBACCO 0802-0108-0152 | 0153 | 0154 | 0155 | 0156
 OXBLOOD 0802-0108-3552 | 3553 | 3554 | 3555 | 3556

ROLAND SANDS DESIGN | ACE GLOVES

FEATURES

- ★ A mid length retro styled gauntlet
- ★ Top grain cowhide
- ★ Padded back of hand and wrist
- ★ Padded and flex ribbed knuckles
- ★ Stretch elastic / leather ribbed cuff
- ★ Asymmetrical protective cuff
- ★ Reinforced and padded palm
- ★ Pre-curved ergonomic fit
- ★ CE EN 13594:2015 certified

COLOURS



BLACK TOBACCO OXBLOOD

AVAILABLE SIZES

S | M | L | XL | XXL



CODE | BLACK 0802-0107-0052 | 0053 | 0054 | 0055 | 0056
 TOBACCO 0802-0107-0152 | 0153 | 0154 | 0155 | 0156
 SAND 0802-0107-1152 | 1153 | 1154 | 1155 | 1156

ROLAND SANDS DESIGN | BARFLY GLOVES

FEATURES

- ★ Top grain cowhide
- ★ Strap/velcro close
- ★ Reinforced and padded palm
- ★ Pre-curved ergonomic fit
- ★ Flex knuckles

COLOURS



BLACK WORN IN BLACK TOBACCO

AVAILABLE SIZES

S | M | L | XL | XXL



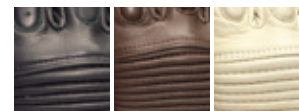
CODE | BLACK 0802-0100-0052 | 0053 | 0054 | 0055 | 0056
 TOBACCO 0802-0100-0152 | 0153 | 0154 | 0155 | 0156
 SAND 0802-0100-1152 | 1153 | 1154 | 1155 | 1156

ROLAND SANDS DESIGN | DEZEL GLOVES

FEATURES

- ★ The much imitated super retro styled Roland Sands Design Dezel gloves with dual leather colouring, ribbed back and zip closure
- ★ Short zip/strap close
- ★ Flex ribbing
- ★ Reinforced and padded palm
- ★ Pre-curved ergonomic fit
- ★ Padded finger knuckles

COLOURS



BLACK TOBACCO SAND

AVAILABLE SIZES

S | M | L | XL | XXL



CODE | 0802-0113-3752 | 3753 | 3754 | 3755 | 3756 | 3757

ROLAND SANDS DESIGN | LAUNCH GLOVES

FEATURES

- ★ Dyneema® Denim
- ★ Pre-Curved Fit
- ★ Brushed Poly Tricot Lining
- ★ Cowhide Double Leather Palm
- ★ Leather Flex Ribbing
- ★ Perforated Fourchettes
- ★ Cell Touch
- ★ Custom Slider For Closure

COLOURS



BLACK

AVAILABLE SIZES

S | M | L | XL | XXL | XXXL



CODE | BLACK 0802-0102-0052 | 0053 | 0054 | 0055 | 0056
 WHITE BLUE 0802-0102-2152 | 2153 | 2154 | 2155 | 2156
 TOBACCO 0802-0102-0152 | 0153 | 0154 | 0155 | 0156

ROLAND SANDS DESIGN | PERISTYLE GLOVES

FEATURES

- ★ Evel Kneivel look, cool retro MX style gloves, with highest quality leather and ergonomic fit
- ★ Classic MX inspired all-around riding glove
- ★ Top Grain Cowhide palm with reinforced padded areas
- ★ Heavy stretch knit back
- ★ Custom RSD starts knit stretch cuff
- ★ Padded leather knuckles
- ★ Pre-curved ergonomic fit
- ★ CE EN 13594:2015 certified

COLOURS



AVAILABLE SIZES

S | M | L | XL | XXL



CODE | BLACK 0802-0101-0052 | 0053 | 0054 | 0055 | 0056
 TOBACCO 0802-0101-0152 | 0153 | 0154 | 0155 | 0156
 OXBLOOD 0802-0101-3552 | 3553 | 3554 | 3555 | 3556

ROLAND SANDS DESIGN | RONIN GLOVES

FEATURES

- ★ Top Grain Cowhide
- ★ Low profile hook'n'loop tab close
- ★ Custom RSD embroidered branding
- ★ Flex ribbed knuckles
- ★ Reinforced and padded palm, padded back of hand
- ★ Pre-curved ergonomic fit

COLOURS



BLACK TOBACCO OXBLOOD

AVAILABLE SIZES

S | M | L | XL | XXL



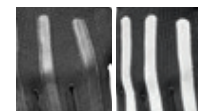
CODE | BLACK 0802-0110-0052 | 0053 | 0054 | 0055 | 0056 | 0057
 BLACK/WHITE 0802-0110-3852 | 3853 | 3854 | 3855 | 3856 | 3857

ROLAND SANDS DESIGN | STRAND GLOVES

FEATURES

- ★ Stretch mesh textile glove
- ★ Clarino® palm
- ★ Leather trim
- ★ Pre-curved fit
- ★ Padded palm
- ★ Neoprene cuffs with velcro custom closures
- ★ Cell touch
- ★ Silicone grip

COLOURS



BLACK BLACK/WHITE

AVAILABLE SIZES

S | M | L | XL | XXL | XXXL



CODE | BLACK 0802-0109-0052 | 0053 | 0054 | 0055 | 0056 | 0057
 RANGER 0802-0109-0652 | 0653 | 0654 | 0655 | 0656 | 0657

ROLAND SANDS DESIGN | TRUMAN GLOVES

FEATURES

- ★ 12oz waxed cotton
- ★ Pre-curved fit
- ★ Brushed poly tricot lining
- ★ Cowhide double leather palm
- ★ Leather flex ribbing
- ★ Perforated fourchettes
- ★ Cell touch
- ★ Custom slider for closure

COLOURS



BLACK RANGER TOBACCO

AVAILABLE SIZES

S | M | L | XL | XXL | XXXL



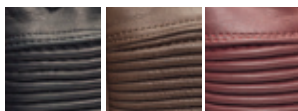
CODE | BLACK 0802-1105-0052 | 0053 | 0054 | 0055
 TOBACCO 0802-1105-0152 | 0153 | 0154 | 0155
 OXBLOOD 0802-1105-3252 | 3253 | 3254 | 3255 | 3256

ROLAND SANDS DESIGN | LADIES GEZEL GLOVES

FEATURES

- ★ The much imitated super retro styled Roland Sands Design Gezel gloves with dual leather colouring, ribbed back and zip closure
- ★ Top Grain Cowhide
- ★ Short zip/strap close
- ★ Flex Ribbing
- ★ Reinforced and padded palm, fingers and knuckles
- ★ Pre-curved ergonomic fit
- ★ Padded finger knuckles

COLOURS



BLACK TOBACCO OXBLOOD

AVAILABLE SIZES

S | M | L | XL



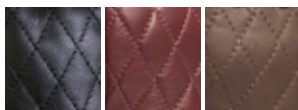
CODE | BLACK 0802-1104-0052 | 0053 | 0054 | 0055
 OXBLOOD 0802-1104-3252 | 3253 | 3254 | 3255 | 3256
 TOBACCO 0802-1104-0152 | 0153 | 0154 | 0155

ROLAND SANDS DESIGN | LADIES RIOT GLOVES

FEATURES

- ★ Quilted detailed leather glove with a great fit
- ★ Top Grain cowhide leather construction
- ★ Reinforced double layers in protective areas
- ★ Comfort riding fit, with pre-curved grip
- ★ Low profile hook'n'loop tab close
- ★ Custom RSD embossed branding
- ★ CE EN 13594:2015 certified

COLOURS



BLACK OXBLOOD TOBACCO

AVAILABLE SIZES

S | M | L | XL | XXL



CODE | 0805-0428-0000

ROLAND SANDS DESIGN | CORPO BEANIE

FEATURES

- ★ RSD loop label
- ★ 100% Hypoallergenic Acrylic
- ★ Cuff Knit Beanie

COLOURS



BLACK

AVAILABLE SIZES

One size



CODE | 0805-0430-0000

ROLAND SANDS DESIGN | CORPO CAP

FEATURES

- ★ Embroidered logo & RSD loop label
- ★ Flexfit 110 6-panel Flatbill
- ★ Adjustable snapback

COLOURS



BLACK

AVAILABLE SIZES

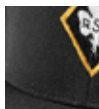
One size



CODE | 0805-0424-0000

ROLAND SANDS DESIGN | CLOVER CAP**FEATURES**

- ★ Embroidered logo & RSD loop label
- ★ Flexfit 110 6-panel Flatbill
- ★ Adjustable snapback

COLOURS**AVAILABLE SIZES**

BLACK/CHARCOAL

One size



CODE | 0805-0429-0000

ROLAND SANDS DESIGN | SPEEDSHOP CAP**FEATURES**

- ★ Embroidered logo & RSD loop label
- ★ Flexfit 110 6-panel Flatbill
- ★ Adjustable snapback

COLOURS**AVAILABLE SIZES**

BLACK

One size



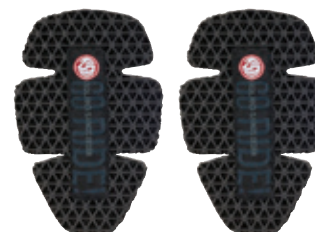
CODE | FOR MEN 0807 0304 005

FOR WOMEN 0807 1304 005

ROLAND SANDS DESIGN | ARMOUR CE PACK**BACK FEATURES**

- ★ Nitrex Evo® patented technology gives protection evenly across surface
- ★ Repeat performance for multiple impacts
- ★ Lightweight and flexible
- ★ Grid pattern reduces weight

- ★ Fits all RSD jackets with armor ready pockets
- ★ CE rated 1621-2: 2002
- ★ 8" inches wide by 14" inches tall and 0.65" inches thick
- ★ One size

**SHOULDER FEATURES**

- ★ Nitrex Evo® patented technology gives protection evenly across surface
- ★ Repeat performance for multiple impacts
- ★ Lightweight and flexible
- ★ Grid pattern reduces weight

- ★ Fits all RSD jackets with armor ready pockets
- ★ CE rated 1621-1:1997
- ★ Sold as a pair
- ★ 5.25" inches wide by 8" inches tall and 0.5" inches thick

**ELBOW FEATURES**

- ★ Nitrex Evo® patented technology gives protection evenly across surface
- ★ Repeat performance for multiple impacts
- ★ Lightweight and flexible
- ★ Grid pattern reduces weight

- ★ Fits all RSD jackets with armor ready pockets
- ★ CE rated 1621-1:1997
- ★ Sold as a pair
- ★ 7.5" inches wide by 9.5" inches tall and 0.5" inches thick

COLOURS**AVAILABLE SIZES**

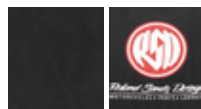
BLACK

One size

CODE | 0804-0768-0052 | 0053 | 0054 | 0055 | 0056

ROLAND SANDS DESIGN | CORPO T-SHIRT**FEATURES**

- ★ 145gms, 100% cotton
- ★ Cotton premium tee
- ★ Print graphic
- ★ Traditional crew neck with slim fit
- ★ Tagless neck label
- ★ Custom RSD loop label detail

**COLOURS****AVAILABLE SIZES**

BLACK

BACK DESIGN

S | M | L | XL | XXL

CODE | BLACK 0804-0760-0052 | 0053 | 0054 | 0055 | 0056

VINTAGE WHITE 0804-0760-2152 | 2153 | 2154 | 2155 | 2156

ROLAND SANDS DESIGN | HOOLIGAN T-SHIRT**FEATURES**

- ★ 145gms, 100% cotton
- ★ Cotton premium tee
- ★ Print graphic
- ★ Traditional crew neck with slim fit
- ★ Tagless neck label
- ★ Custom RSD loop label detail

**COLOURS****AVAILABLE SIZES**

BLACK

VINTAGE WHITE

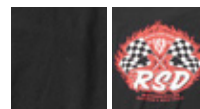
BACK DESIGN

S | M | L | XL | XXL

CODE | 0804-0762-0052 | 0053 | 0054 | 0055 | 0056

ROLAND SANDS DESIGN | SPEEDSHOP T-SHIRT**FEATURES**

- ★ 145gms, 100% cotton
- ★ Cotton premium tee
- ★ Print graphic
- ★ Traditional crew neck with slim fit
- ★ Tagless neck label
- ★ Custom RSD loop label detail

**COLOURS****AVAILABLE SIZES**

BLACK

BACK DESIGN

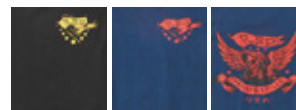
S | M | L | XL | XXL

CODE | BLACK 0804-0763-0052 | 0053 | 0054 | 0055 | 0056

NAVY 0804-0763-4052 | 4053 | 4054 | 4055 | 4056

ROLAND SANDS DESIGN | SPILLS T-SHIRT**FEATURES**

- ★ 145gms, 100% cotton
- ★ Cotton premium tee
- ★ Print graphic
- ★ Traditional crew neck with slim fit
- ★ Tagless neck label
- ★ Custom RSD loop label detail

**COLOURS****AVAILABLE SIZES**

BLACK

NAVY

BACK DESIGN

S | M | L | XL | XXL

CODE | BLACK 0804-0769-0052 | 0053 | 0054 | 0055 | 0056
 NAVY 0804-0769-4052 | 4053 | 4054 | 4055 | 4056
 RED 0804-0769-4152 | 4153 | 4154 | 4155 | 4156

ROLAND SANDS DESIGN | SUPER HOOLIGAN T-SHIRT

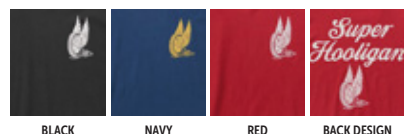
FEATURES

- ★ 145gms, 100% cotton
- ★ Cotton premium tee
- ★ Print graphic
- ★ Traditional crew neck with slim fit
- ★ Tagless neck label
- ★ Custom RSD loop label detail



COLOURS

AVAILABLE SIZES



S | M | L | XL | XXL

CODE | BLACK 0804-0764-0052 | 0053 | 0054 | 0055 | 0056
 NAVY 0804-0764-4052 | 4053 | 4054 | 4055 | 4056
 VINTAGE WHITE 0804-0764-2152 | 2153 | 2154 | 2155 | 2156

ROLAND SANDS DESIGN | HOOLIGAN T-SHIRT

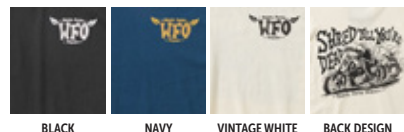
FEATURES

- ★ 145gms, 100% cotton
- ★ Cotton premium tee
- ★ Print graphic
- ★ Traditional crew neck with slim fit
- ★ Tagless neck label
- ★ Custom RSD loop label detail



COLOURS

AVAILABLE SIZES



S | M | L | XL | XXL

CODE | 0806-0414-0052 | 0053 | 0054 | 0055 | 0056

ROLAND SANDS DESIGN | HOOLIGAN EAGLE ZIP HOODIE

FEATURES

- ★ Print graphic
- ★ 290gm 80/20 cotton/poly hoodie
- ★ Comfy fit
- ★ Custom RSD loop label detail
- ★ Front Zip



COLOURS

AVAILABLE SIZES



S | M | L | XL | XXL

CODE | 0806-0415-0052 | 0053 | 0054 | 0055 | 0056

ROLAND SANDS DESIGN | SUPER HOOLIGAN ZIP HOODIE

FEATURES

- ★ Print graphic
- ★ 290gm 80/20 cotton/poly hoodie
- ★ Comfy fit
- ★ Custom RSD loop label detail
- ★ Front Zip



COLOURS

AVAILABLE SIZES



S | M | L | XL | XXL



CODE | BLACK 0804-1766-0052 | 0053 | 0054 | 0055 | 0056
GREY 0804-1766-2052 | 2053 | 2054 | 2055 | 2056

ROLAND SANDS DESIGN | LADIES RIDE 'EM TANK

FEATURES

- ★ Print graphic
- ★ 145gms, cotton/poly/rayon blend
- ★ Tagless neck label
- ★ Custom RSD loop label detail

COLOURS



BLACK

GREY

AVAILABLE SIZES

S | M | L | XL | XXL



CODE | 0803-1805-1852 | 1853 | 1854 | 1855 | 1856

ROLAND SANDS DESIGN | LADIES RIDE 'EM ZIP HOODIE

FEATURES

- ★ Print graphic
- ★ 290gm 80/20 cotton/poly hoodie
- ★ Comfy fit
- ★ Custom RSD loop label detail
- ★ Front Zip

COLOURS



BLACK

AVAILABLE SIZES

S | M | L | XL | XXL



CODE | BLACK 0810-0301-0052 | 0053 | 0054 | 0055 | 0056 | 0057
BLACK 0810-0301-0062 | 0063 | 0064 | 0065
GREY 0810-0301-0852 | 0853 | 0854 | 0855 | 0856 | 0857
GREY 0810-0301-0862 | 0863 | 0864 | 0865
WHISKEY 0810-0301-1252 | 1253 | 1254 | 1255 | 1256 | 1257
WHISKEY 0810-0301-1262 | 1263 | 1264 | 1265
OXBLOOD 0810-0301-3552 | 3553 | 3554 | 3555 | 3556 | 3557
OXBLOOD 0810-0301-3562 | 3563 | 3564 | 3565

ROLAND SANDS DESIGN | MOJAVE BOOT

FEATURES

- ★ Genuine cowhide leathern
- ★ Hipora® waterproof barrier with gusseted tongue construction
- ★ RSD removable insolen
- ★ Shank is incorporated into the mid-sole
- ★ Waxed laces
- ★ Reinforced toe box, heel and sides
- ★ 3M™ Scotchlite reflective detail
- ★ Vibram® Soles: Zig Zag pattern provides slip resistance / durability, excellent shock absorption, lightweight



COLOURS

AVAILABLE SIZES



GREY



BLACK



OXBLOOD



WHISKEY

8 | 9 | 10 | 11 | 12 | 13
8.5 | 9.5 | 10.5 | 11.5

CODE | BLACK 0800-0802-0050
TOBACCO 0800-0802-0150

ROLAND SANDS DESIGN | WHITTIER WALLET

FEATURES

- ★ A super high quality leather folded bill/card sized wallet, waxed cotton lining, quilted design to front and snap button closure
- ★ Top grain leather
- ★ Slim credit card / billfold
- ★ Pull tab for easy credit card accessibility
- ★ Quilted accents



COLOURS



BLACK

TOBACCO

AVAILABLE SIZES

One size

CODE | BLACK 0800-0803-0050
TOBACCO 0800-0803-0150

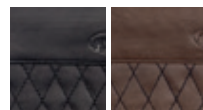
ROLAND SANDS DESIGN | CRENSHAW WALLET

FEATURES

- ★ A super high quality leather folded bill/card sized wallet, waxed cotton lining, quilted design to front and zip closure to secure your contents
- ★ Top grain leather
- ★ Fold / zipper close
- ★ Waxed cotton lined
- ★ Credit card slots
- ★ Bill pocket



COLOURS



BLACK

TOBACCO

AVAILABLE SIZES

One size

CODE | 0800-0800-0150 | 0808-0800-0050

ROLAND SANDS DESIGN | WILMINGTON WALLET

FEATURES

- ★ A super high quality leather bill sized wallet, waxed cotton lining, pockets for cards, quilted design to front and a top quality leather braided cord with a snap button clip
- ★ Top grain leather
- ★ Bill size wallet



COLOURS



TOBACCO

BLACK

AVAILABLE SIZES

One size

CODE | BLACK 0800-0801-0050
TOBACCO 0800-0801-0150

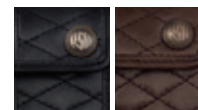
ROLAND SANDS DESIGN | RIVERSIDE WALLET

FEATURES

- ★ A super high quality leather folded bill/card sized wallet, waxed cotton lining, quilted design to front, two snap button closure and a top quality leather braided cord with a snap button clip
- ★ Top grain leather
- ★ Folded Bill/Card size wallet



COLOURS



BLACK

TOBACCO

AVAILABLE SIZES

One size

CODE | BLACK 0808-0800-0052 | 0053 | 0054 | 0055
BROWN 0808-0800-0152 | 0153 | 0154 | 0155

ROLAND SANDS DESIGN | DEBO EMOSS BELT

FEATURES

- ★ 12oz saddle quality, steer hide
- ★ Custom embossed design
- ★ Thick stitching details
- ★ Roller buckle can easily be replaced
- ★ Made in USA



COLOURS



BLACK

BROWN

AVAILABLE SIZES

S | M | L | XL

CODE | BLACK 0808-0801-0052 | 0053 | 0054 | 0055
BROWN 0808-0801-0152 | 0153 | 0154 | 0155

ROLAND SANDS DESIGN | DEBO BELT

FEATURES

- ★ 12oz saddle quality, steer hide
- ★ Thick stitching details
- ★ Roller buckle can easily be replaced
- ★ Made in USA



COLOURS



BLACK

BROWN

AVAILABLE SIZES

S | M | L | XL

WWW.DOT4DISTRIBUTION.COM



+44 (0)20 3514 2413

INFO@DOT4DISTRIBUTION.COM



UNIT 15, WOODLEA PARK, STATION APPROACH, MEDSTEAD,
FOUR MARKS, HAMPSHIRE, GU34 5AZ, UK



WWW.DOT4DISTRIBUTION.COM



+44 (0)20 3514 2413

INFO@DOT4DISTRIBUTION.COM



UNIT 15, WOODLEA PARK, STATION APPROACH, MEDSTEAD,
FOUR MARKS, HAMPSHIRE, GU34 5AZ, UK
